

2023

 **KISHIGO®**
Quality that reflects



"At Kishigo, we believe in looking at safety from every perspective, from the smallest micro-detail to industry-changing innovation. As the most trusted brand in high-visibility workwear, we provide excellence from every angle, and you can see it in everything we do."

Elke Hirschman

Elke Hirschman
General Manager, Kishigo







WATCH NAVIGATION TUTORIAL

TABLE OF CONTENTS

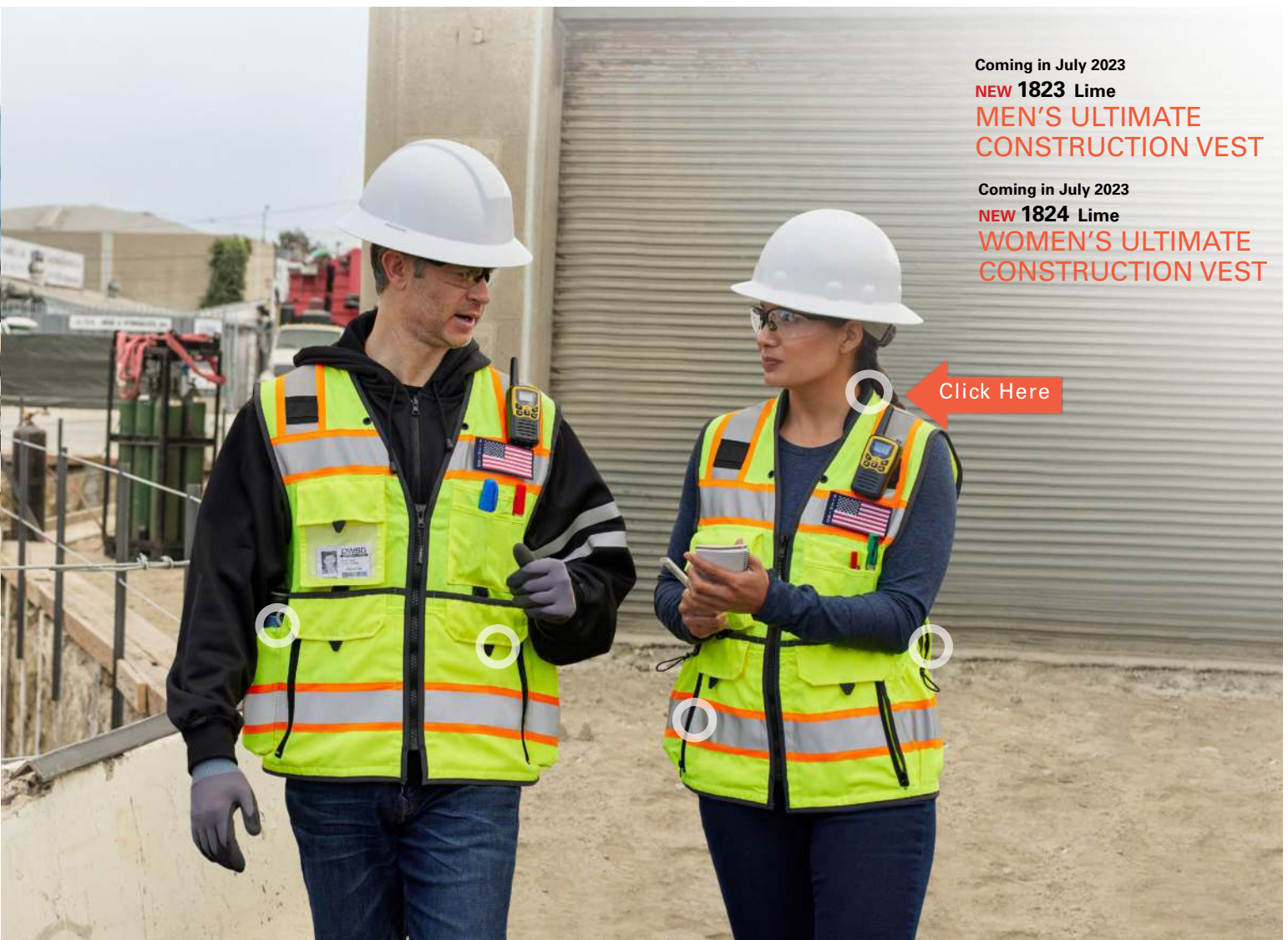
NEW PRODUCTS	5
PREMIUM BLACK SERIES	13
PREMIUM BRILLIANT SERIES	23
ENHANCED VISIBILITY EV SERIES	31
WOMEN'S WORKWEAR	35
FIRE RESISTANT	39
PUBLIC SAFETY	43
CLASS 2	47
CLASS 3	75
BREAKAWAY	83
ENHANCED VISIBILITY	89
ACCESSORIES	97
T-SHIRTS	105
CLASS E PANTS AND GAITERS	119
OUTERWEAR	125
RAINWEAR	139
1971 BY KISHIGO	147



NEW PRODUCTS

INNOVATION. IT'S HOW KISHIGO GOES BEYOND THE STATUS QUO.

We push the envelope when we develop new products. We incorporate more than just garments that are ANSI approved, but create a desire for the workers to want to wear high visibility workwear because we believe in “Inspiring people to live safer lives”. We partner with consumers and industry experts, to help merge functionality and innovation for all our workwear, and we utilize the newest testing capabilities where applicable. Serving the needs of both men and women within a variety of industries, we are able to take one thing off your plate – and that’s wondering if your team is safe and being seen.



WARNING: Cancer and Reproductive Harm
P65Warnings.ca.gov

PREMIUM
BLACK SERIES®

NEW 1820 Lime
TOOL TETHERING VEST

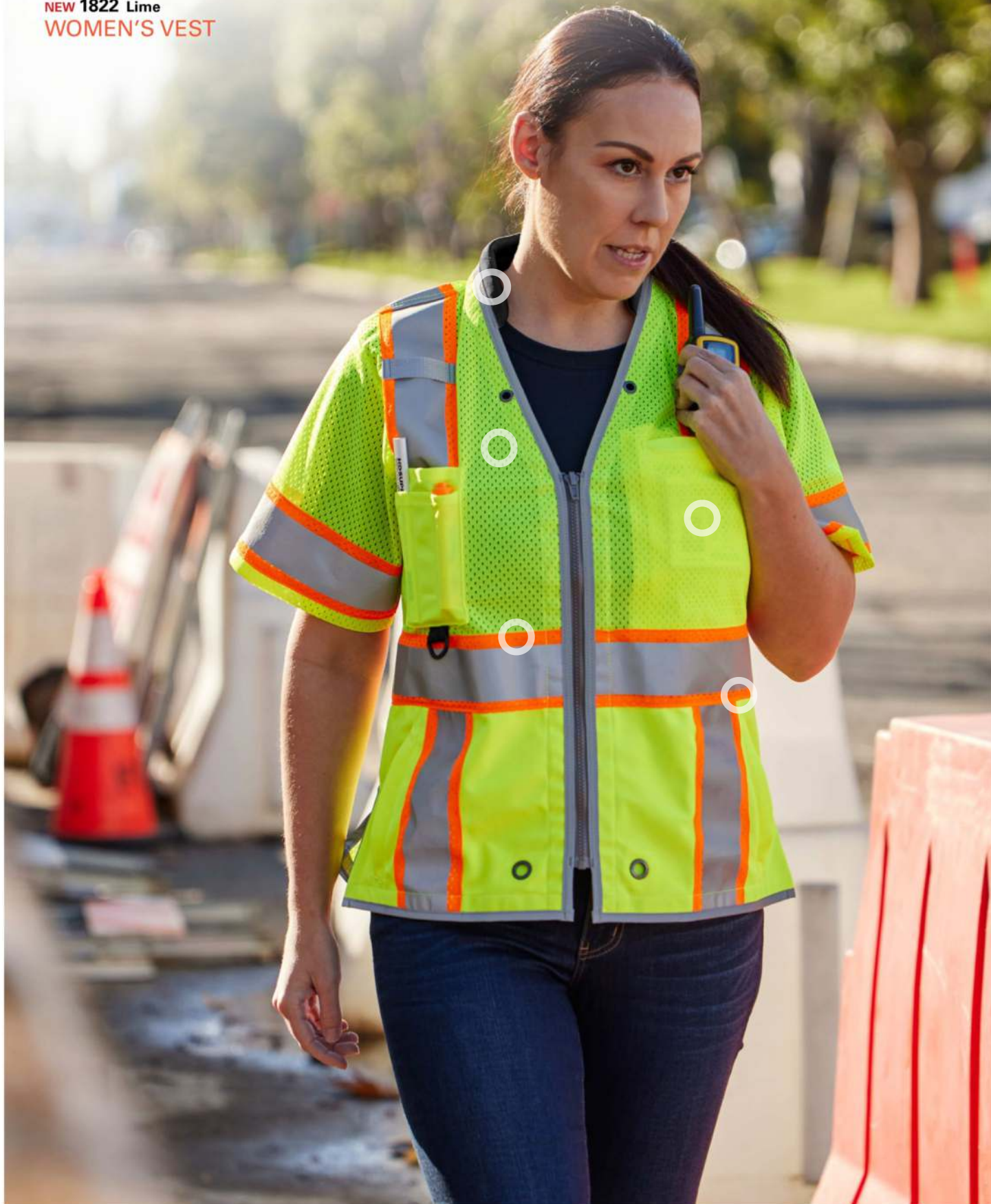
Click Here →



WARNING: Cancer and Reproductive Harm
P65Warnings.ca.gov

PREMIUM
BRILLIANT SERIES®

NEW 1822 Lime
WOMEN'S VEST



WARNING: Cancer and Reproductive Harm
P65Warnings.ca.gov

PREMIUM

BRILLIANT SERIES®

NEW 9181 Lime
CONTRAST
LONG SLEEVE T-SHIRT

PREMIUM

BRILLIANT SERIES®

NEW 9179 Lime
CONTRAST
SHORT SLEEVE T-SHIRT



WARNING: Cancer and Reproductive Harm
P65Warnings.ca.gov

WE MAKE WORKWEAR EMPLOYEES WANT TO WEAR

There is a big difference between have to do and want to do. Between being forced to comply with a rule and being able to choose the right tool for the right job. We make workwear that workers actually want to wear. Our workwear is comfortable, feature-rich, stylish, and gets the job done.



WARNING: Cancer and Reproductive Harm
P65Warnings.ca.gov

PREMIUM

BLACK SERIES®

NEW 9173 Lime

NEW 9175 Lime

NEW 9177 Lime

COOL TOUCH T-SHIRT



WARNING: Cancer and Reproductive Harm
P65Warnings.ca.gov

NEW **IN400** Lime
INSULATED VEST



WARNING: Cancer and Reproductive Harm
P65Warnings.ca.gov

NEW JS156 Lime
CONTRAST BOMBER JACKET
Economy

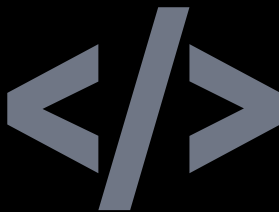


WARNING: Cancer and Reproductive Harm
P65Warnings.ca.gov

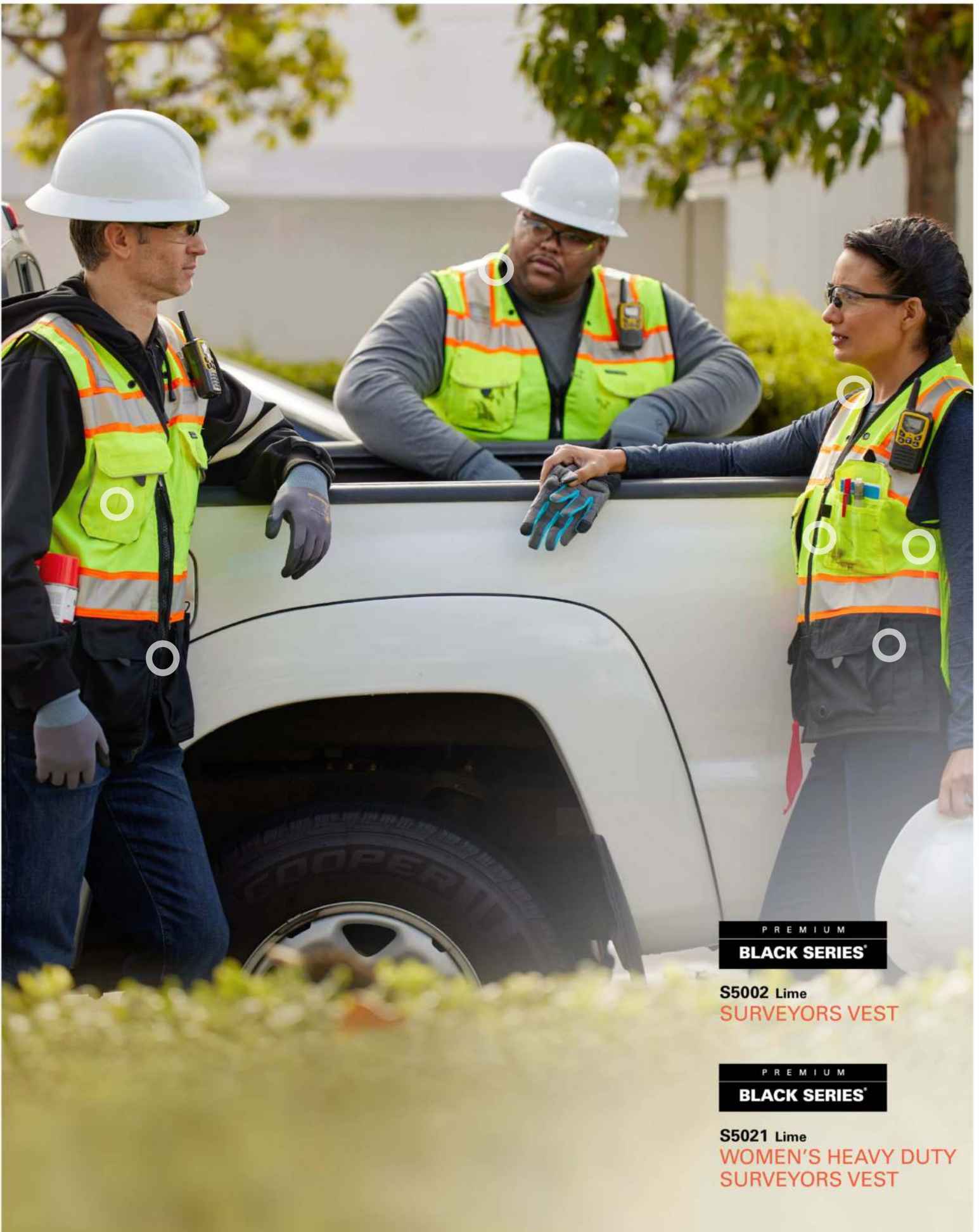
PREMIUM BLACK SERIES

THERE'S NOTHING WRONG WITH WANTING TO LOOK GOOD

Who says you can't have it all? These premium-grade products are designed to stand out, giving you the profile you need without sacrificing the style, versatility or functionality you want. Kishigo's Premium Black Series is carefully crafted using high-quality materials that increase durability and enhance visibility with reflective trim and piping. You're also guaranteed added functionality with cargo and expansive utility pockets. Are you ready to work hard and look good doing it?



WARNING: Cancer and Reproductive Harm
P65Warnings.ca.gov



PREMIUM

BLACK SERIES®

S5002 Lime
SURVEYORS VEST

PREMIUM

BLACK SERIES®

S5021 Lime
WOMEN'S HEAVY DUTY
SURVEYORS VEST



WARNING: Cancer and Reproductive Harm
P65Warnings.ca.gov

PREMIUM

BLACK SERIES®

1514 Orange
HEAVY DUTY VEST

PREMIUM

BLACK SERIES®

1515 Lime
BLACK BOTTOM VEST

PREMIUM

BLACK SERIES®

9114 Lime
T-SHIRT



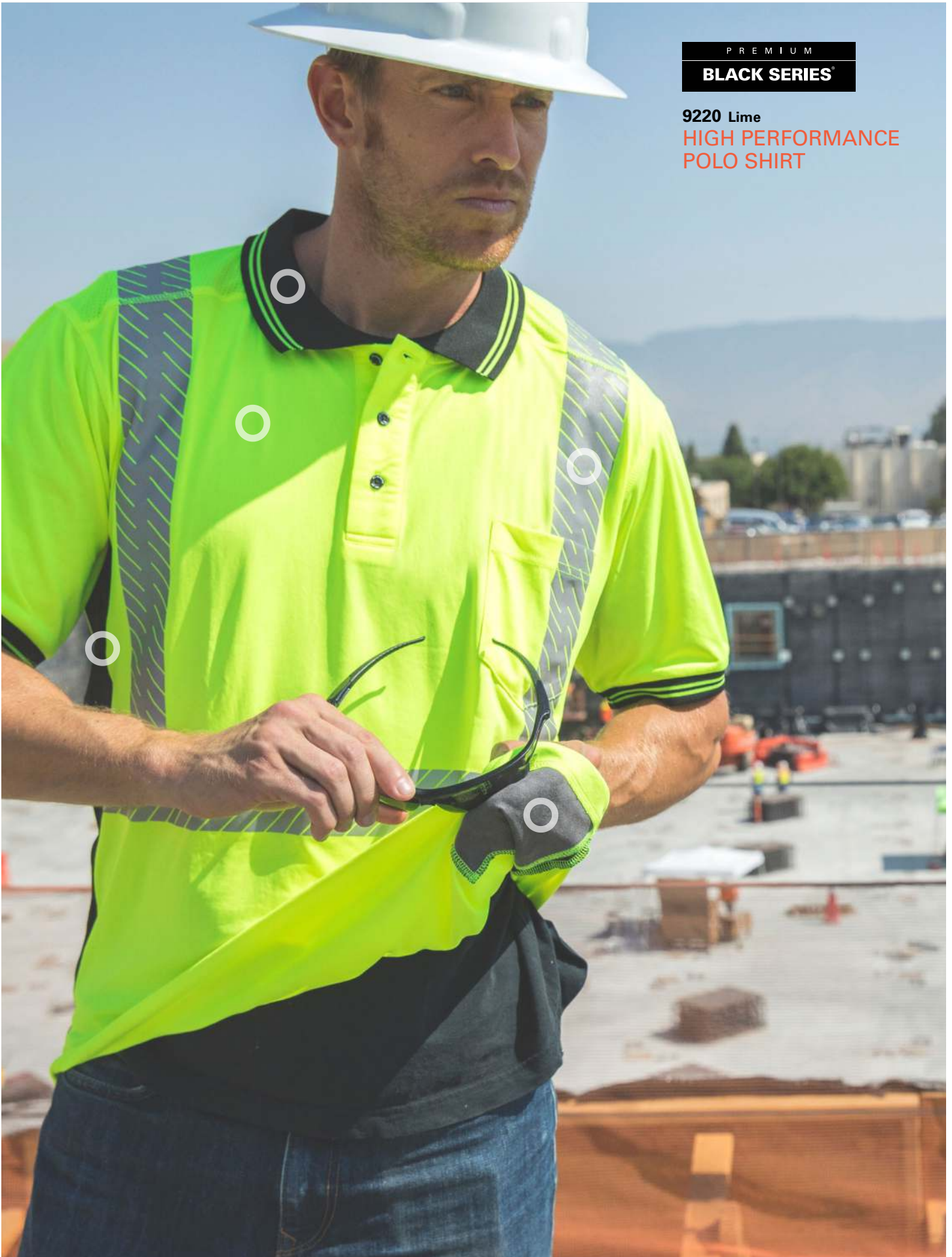
WARNING: Cancer and Reproductive Harm
P65Warnings.ca.gov

PREMIUM

BLACK SERIES®

9220 Lime

**HIGH PERFORMANCE
POLO SHIRT**



WARNING: Cancer and Reproductive Harm
P65Warnings.ca.gov

PREMIUM

BLACK SERIES®

JS135 Lime
2 IN 1 JACKET



WARNING: Cancer and Reproductive Harm
P65Warnings.ca.gov

PREMIUM
BLACK SERIES®

JS140 Lime
HEAVY DUTY PARKA

IN410 Lime
INSULATED PANTS

PREMIUM
BLACK SERIES®

IN412 Lime
INSULATED BIB



WARNING: Cancer and Reproductive Harm
P65Warnings.ca.gov

PREMIUM

BLACK SERIES®

JS137 Lime
SOFT SHELL JACKET

PREMIUM

BLACK SERIES®

JS144 Lime
WOMEN'S SOFT SHELL JACKET



WARNING: Cancer and Reproductive Harm
P65Warnings.ca.gov

PREMIUM

BLACK SERIES®

WB102 Lime
PREMIUM BLACK SERIES
WINDBREAKER



WARNING: Cancer and Reproductive Harm
P65Warnings.ca.gov

PREMIUM

BLACK SERIES®

JS150 Lime

**HOODIE SWEATSHIRT
WITH ZIPPER**

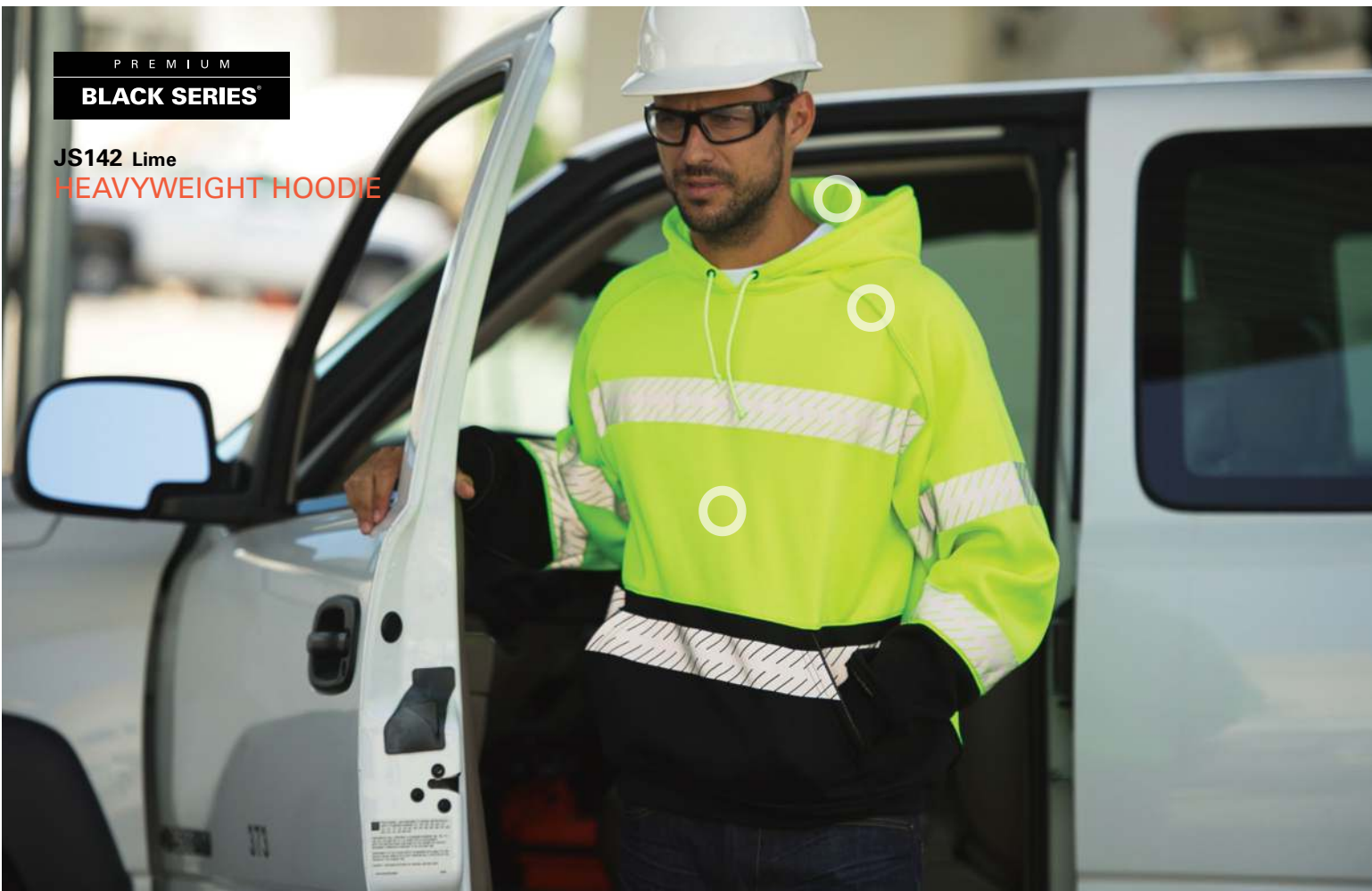


PREMIUM

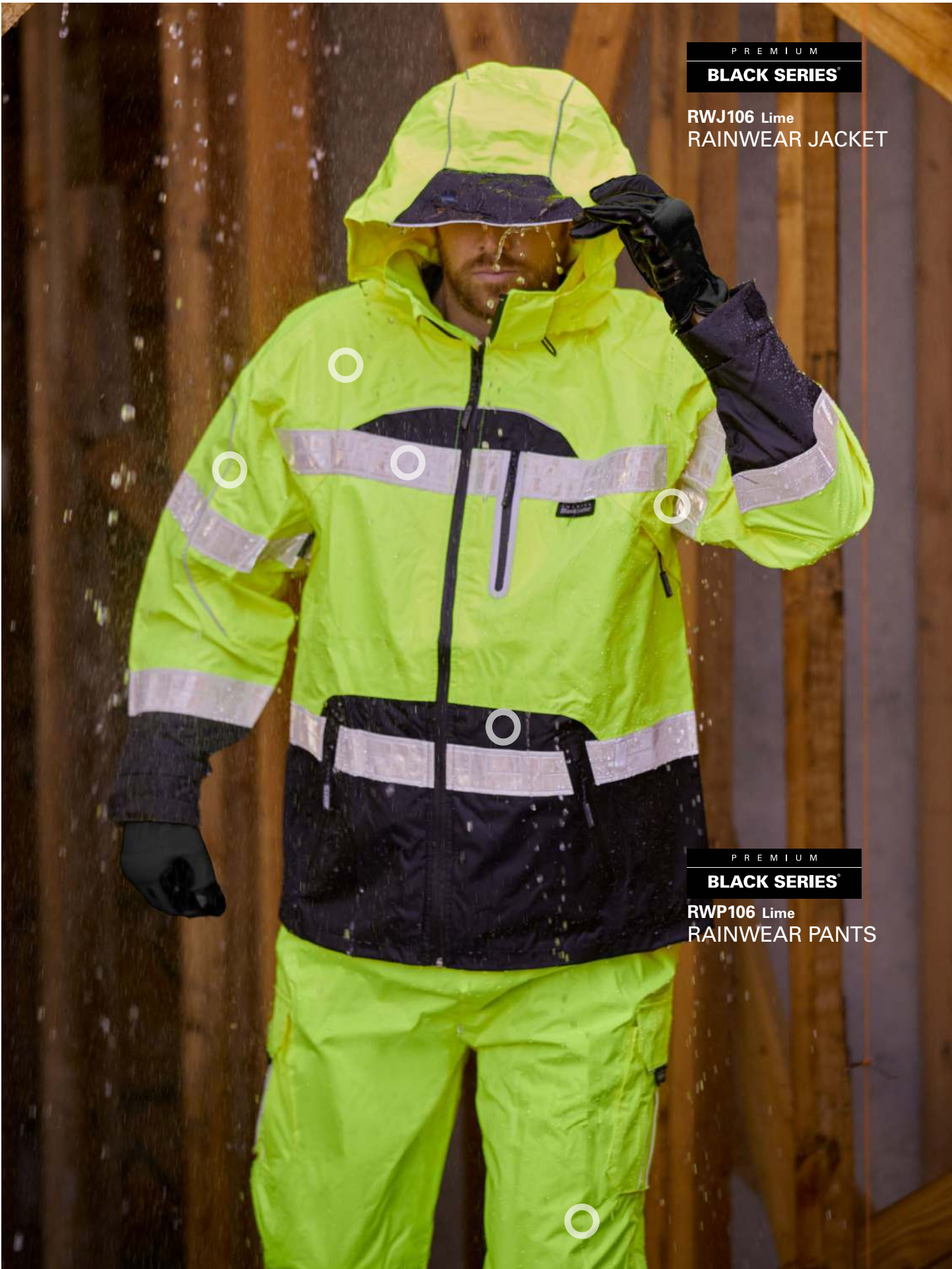
BLACK SERIES®

JS142 Lime

HEAVYWEIGHT HOODIE



WARNING: Cancer and Reproductive Harm
P65Warnings.ca.gov



PREMIUM

BLACK SERIES®

RWJ106 Lime
RAINWEAR JACKET

PREMIUM

BLACK SERIES®

RWP106 Lime
RAINWEAR PANTS

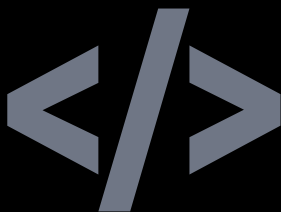


WARNING: Cancer and Reproductive Harm
P65Warnings.ca.gov

PREMIUM BRILLIANT SERIES

THE ULTIMATE IN HIGH VISIBILITY

Your day doesn't run the typical 8-5. Whether you're up and at the jobsite before dawn or working way past sundown, you need workwear that you can trust to make sure you stand out on the job. Kishigo's Premium Brilliant Series was created for maximum visibility. Our unique reflective trim enhances low light visibility and provides instant differentiation between you and the work zone. Ensuring you stay in sight, on site.



WARNING: Cancer and Reproductive Harm
P65Warnings.ca.gov

PREMIUM

BRILLIANT SERIES[®]

1543 Lime
ULTIMATE
REFLECTIVE VEST

3173 Lime
ULTIMATE
REFLECTIVE PANTS



This video can be viewed in fullscreen.



Brilliant Plus
Reflective Material



WARNING: California Proposition 65
P65Warnings.ca.gov

PREMIUM
BRILLIANT SERIES®

1521 Lime
WOMEN'S FITTED
VEST

PREMIUM
BRILLIANT SERIES®

1510 Lime
HEAVY DUTY VEST



PREMIUM
BRILLIANT SERIES®

1576 Lime
X BACK
DUAL COMPLIANT VEST



WARNING: Cancer and Reproductive Harm
P65Warnings.ca.gov



PREMIUM
BRILLIANT SERIES®

1584 Lime
**ULTIMATE REFLECTIVE
CONTRAST VEST**



PREMIUM
BRILLIANT SERIES®

9160 Lime
**HIGH PERFORMANCE
CLASS 2 T-SHIRT**

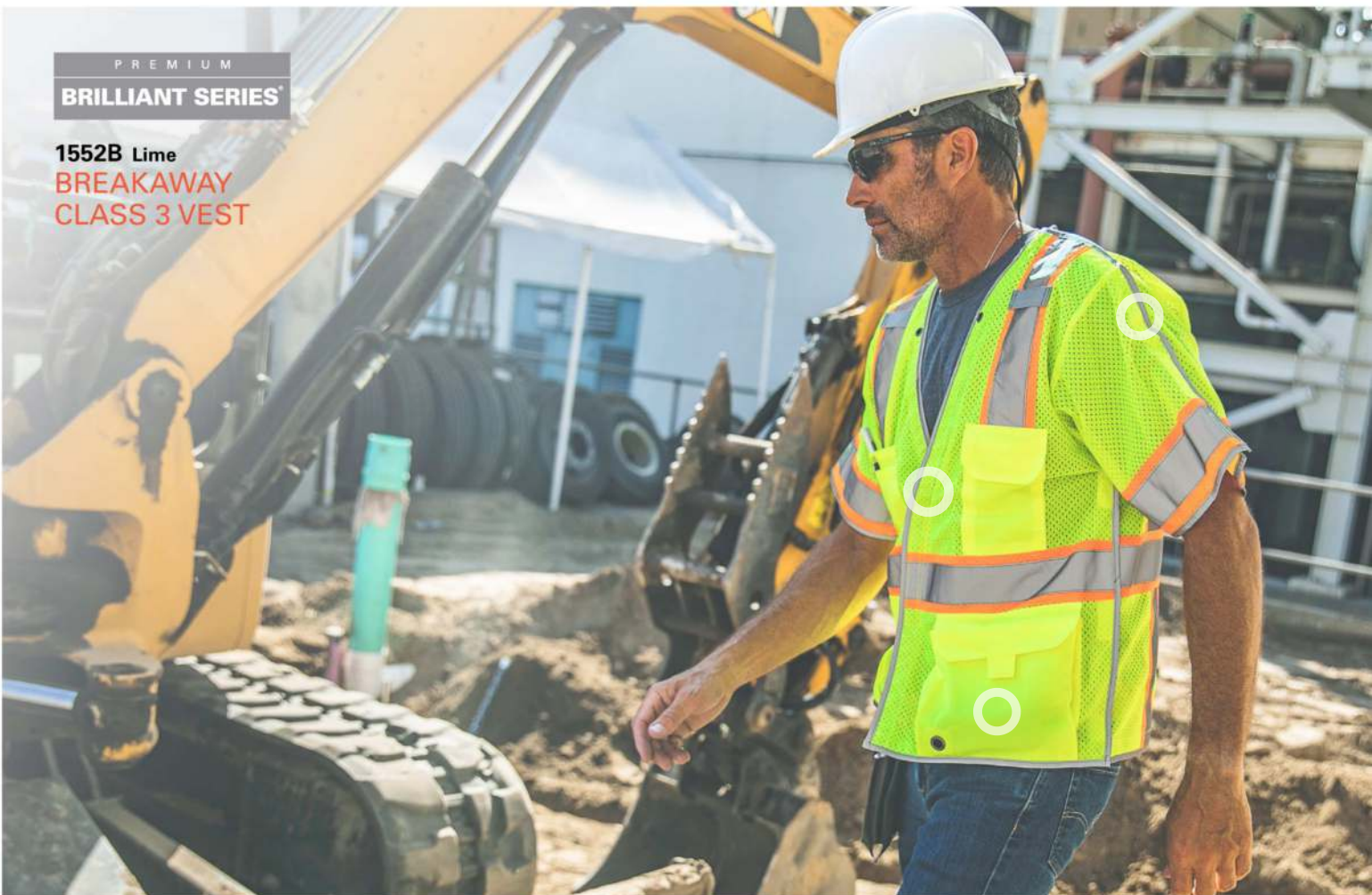


WARNING: Cancer and Reproductive Harm
P65Warnings.ca.gov



PREMIUM
BRILLIANT SERIES®

1550 Lime
HEAVY DUTY VEST



PREMIUM
BRILLIANT SERIES®

1552B Lime
BREAKAWAY
CLASS 3 VEST



WARNING: Cancer and Reproductive Harm
P65Warnings.ca.gov

PREMIUM
BRILLIANT SERIES[®]

1573 Lime
ULTIMATE REFLECTIVE
CLASS 3 VEST



This video can be viewed in fullscreen.



Brilliant Plus
Reflective Material



WARNING: Cancer and Reproductive Harm
P65Warnings.ca.gov

PREMIUM
BRILLIANT SERIES®

JS152 Lime
360 PRO PARKA



This video can be viewed in fullscreen.



2" wide Oralite® GP440
prismatic tape



WARNING: Cancer and Reproductive Harm
P65Warnings.ca.gov



PREMIUM
BRILLIANT SERIES®

JS119 Lime
BOMBER JACKET



PREMIUM
BRILLIANT SERIES®

RWJ108 Lime
LONG RAIN COAT



WARNING: Cancer and Reproductive Harm
P65Warnings.ca.gov

ENHANCED VISIBILITY EV SERIES

REDEFINING ROLES ON SITE

Organizations keep projects running smoothly and the same applies to jobsites. With so many high visibility workwear options available, keeping track of who's who on site can not only be a challenge, but a safety risk. So based on feedback from industry professionals, we designed the Enhanced Visibility Series in a wide range of colors to make that job easier. Imagine identifying new hires, managers, security, medics, or even visitors simply by looking at the color of their vest. It's simple, easy, and efficient.

ENHANCED VISIBILITY

EV SERIES®

B500 Lime

**ENHANCED VISIBILITY
PROFESSIONAL UTILITY VEST**



WARNING: Cancer and Reproductive Harm
P65Warnings.ca.gov



ENHANCED VISIBILITY

EV SERIES®

B102 Blue

B103 Red

ENHANCED VISIBILITY
MULTI POCKET VEST



WARNING: Car and Reproductive Harm
For warnings, visit P66.warnings.ca.gov

ENHANCED VISIBILITY

EV SERIES®

B126 Pink

**ENHANCED VISIBILITY
MESH VEST**



ENHANCED VISIBILITY

EV SERIES®

B200 Black/Lime

**ENHANCED VISIBILITY
CONTRAST T-SHIRT**



WARNING: Cancer and Reproductive Harm
P65Warnings.ca.gov



ENHANCED VISIBILITY

EV SERIES®

B300 Black/Lime

**ENHANCED VISIBILITY
PREMIUM JACKET**

ENHANCED VISIBILITY

EV SERIES®

B310 Black/Lime

**ENHANCED VISIBILITY
HEAVYWEIGHT HOODIE**



WARNING: Cancer and Reproductive Harm
P65Warnings.ca.gov

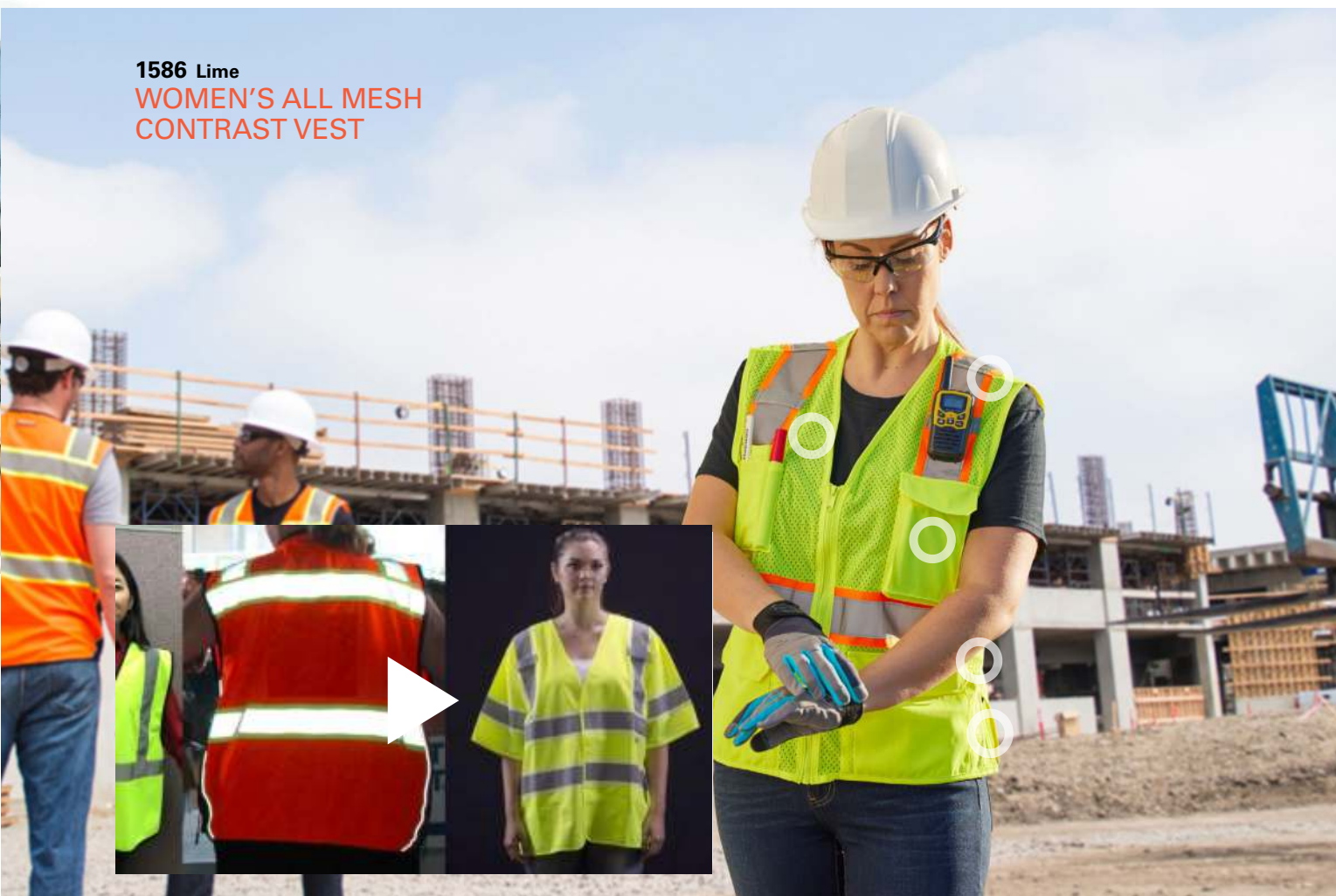
WOMEN'S WORKWEAR

DESIGNED FOR WOMEN, BY WOMEN

"As the workforce continues to evolve, women play an even more significant role at every level in the construction industry. When we looked at the high visibility market, we noticed women in large boxy designs, oversized neck drops/armholes, and garments that were too long. In addition, improperly fitted garments can create secondary safety hazards. Therefore, we spent countless hours designing garments that fit for women. We focused on ensuring that the waist properly cinched and narrowed the shoulders for creating the perfect fit, pockets are ergonomically positioned for function and style that is appealing to women."

Sandra Hanna, VP of Product Development and Marketing, Kishigo

1586 Lime WOMEN'S ALL MESH CONTRAST VEST



WARNING: Cancer and Reproductive Harm
P65Warnings.ca.gov



PREMIUM
BLACK SERIES®

S5021 Lime
**WOMEN'S HEAVY DUTY
SURVEYORS VEST**



NEW 1824 Lime
**WOMEN'S ULTIMATE
CONSTRUCTION VEST**



WARNING: Cancer and Reproductive Harm
P65Warnings.ca.gov

PREMIUM

BRILLIANT SERIES®

1521 Lime
WOMEN'S
FITTED VEST



PREMIUM

BRILLIANT SERIES®

NEW 1822 Lime
WOMEN'S VEST



WARNING: Cancer and Reproductive Harm
P65Warnings.ca.gov



PREMIUM
BLACK SERIES®

JS144 Lime
**WOMEN'S
SOFT SHELL JACKET**



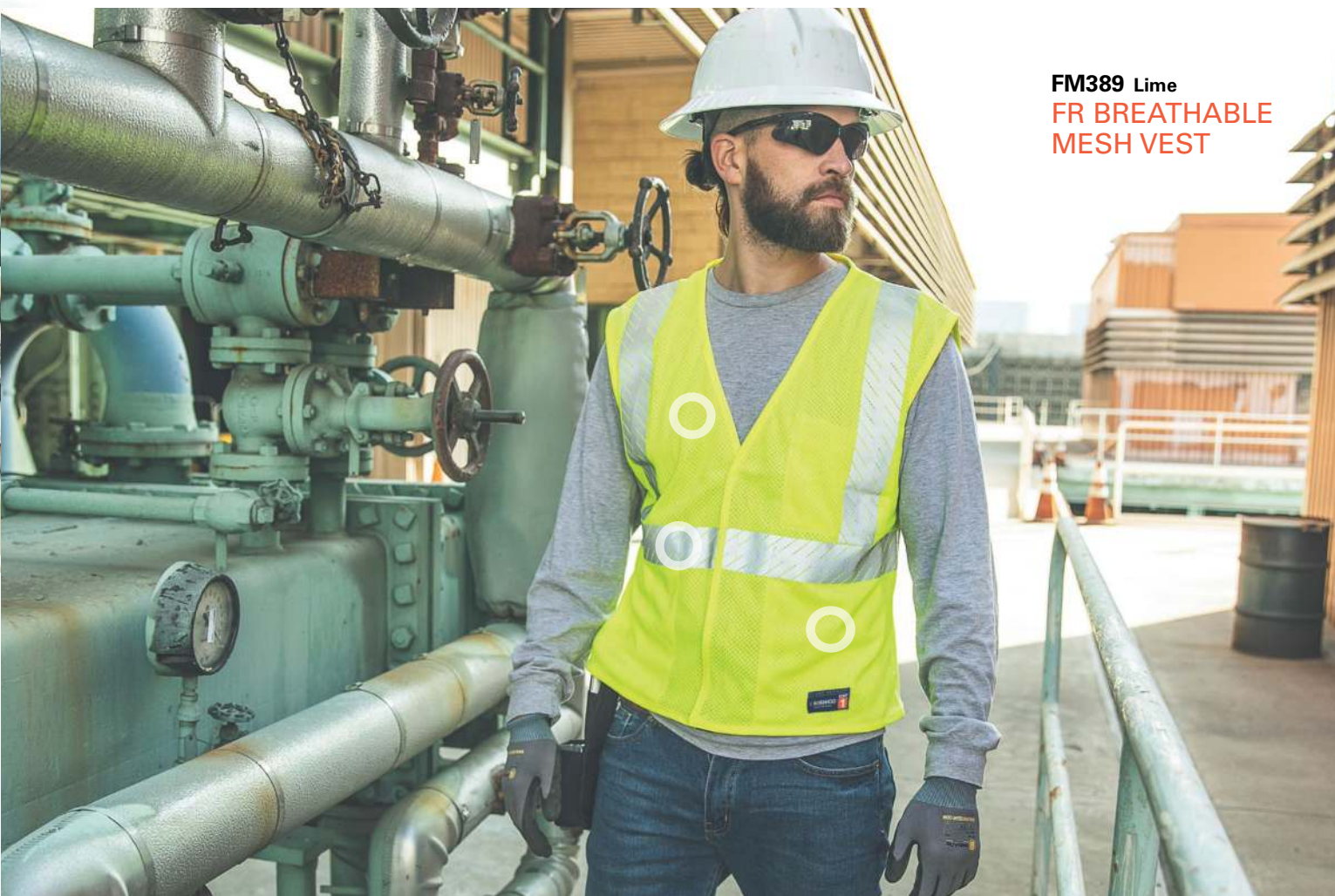
WARNING: Cancer and Reproductive Harm
P65Warnings.ca.gov

FIRE RESISTANT

"I take what I wear to the Job Site seriously. It's one of the most important decisions of my day."

Adam, Special Inspector

FM389 Lime
FR BREATHABLE
MESH VEST



WARNING: Cancer and Reproductive Harm
P65Warnings.ca.gov

FM410 Lime
FR BLACK BOTTOM
MESH VEST



WARNING: Cancer and Reproductive Harm
P65Warnings.ca.gov

F442 Lime
FR ARC VEST

F498 Lime
FR ECONOMY VEST



F506 Lime
FR LONG SLEEVE
T-SHIRT



WARNING: Cancer and Reproductive Harm
P65Warnings.ca.gov



F694 Lime
FR LONG SLEEVE
HENLEY T-SHIRT



F507 Lime
FR SWEATSHIRT
HOODIE



WARNING: Cancer and Reproductive Harm
P65Warnings.ca.gov

PUBLIC SAFETY

You're the person in charge and people look to you for guidance in the midst of the chaos. Whether you're at the scene of an accident or pulling debris off the road, visibility has never been more important. Our durable, high-quality Public Safety vests ensure you're seen no matter the job. And with features like 4 or 5 point breakways for doffing, you'll be ready to take it off if the situation calls for it. Ensure that you're wearing the best when it matters most.

8055BZ Lime/Black
200 PSV
PUBLIC SAFETY VEST



WARNING: Cancer and Reproductive Harm
P65Warnings.ca.gov

4007BZ Lime/Black
400 PSV - PUBLIC SAFETY
VESTS



WARNING: Cancer and Reproductive Harm
P65Warnings.ca.gov



4003BV
Lime/Red (Fire)



Ultra-Cool™ shoulders
and back.
Breakaway shoulders.
Badge holder.
Name tag holder.

4-season adjustability.



4001BZ
Lime/Black (Police)



4007BZ
Lime/Black (Security)

PREMIUM
BRILLIANT SERIES™

400 PSV

PERFORMANCE FEATURES

- < Lightweight solid polyester front with Ultra-Cool™ 100% mesh shoulders and back.
- < 5-point breakaway on 4003BV.
- < 4-point breakaway on 4001BZ and 4007BZ.
- < 4-season adjustability allows for accurate sizing in any weather, even over bulky coats.
- < Two 1" wide high performance reflective material with contrast.
- < Brilliant Trim reflective edging improves low light visibility.
- < Convenient left mic tab holder.
- < Handy left chest badge holder & right chest name tag holder.

POCKETS

- < Left chest pencil/pen pocket.
- < Inside large lower patch pocket (when not in use, the vest folds into convenient storage pouch).

SIZES: M-XL, 2X-4X

ANSI 107 Type P | Class 2 Compliant



WARNING: Cancer and Reproductive Harm
P65Warnings.ca.gov



8051BZ
Lime/Blue (Police)



- Left chest mic tab.
- Breakaway shoulders.
- Clear identification.
- Mesh material.
- 4-season adjustability.



8052BV
Lime/Red (Fire)



8055BZ
Lime/Black (Security)

200 PSV

PERFORMANCE FEATURES

- < Upper mesh and lower solid polyester material.
- < 5-point breakaway on 8052BV.
- < 4-point breakaway on 8051BZ, 8054BZ, and 8055BZ.
- < Two 1" wide high performance reflective material with 4 1/2" lime contrast.
- < 4-season adjustability allows for accurate sizing in any weather, even over bulky coats.
- < Convenient left chest mic tab holder.

POCKETS

- < Left chest pencil/pen pocket.
- < Inside large lower patch pocket (when not in use, the vest folds into convenient storage pouch).

SIZES: M-XL, 2X-4X

ANSI 107 Type P | Class 2 Compliant



3705i Green **3710i** Yellow **3702i** Black **3712i** Fluorescent Orange



3713i Fluorescent Yellow **3711i** White **3707i** International Orange **3709i** Light Blue **3704i** Royal Blue

3700 SERIES INCIDENT COMMAND VEST

PERFORMANCE FEATURES

- < 100% polyester fabric with matching color trim.
- < Hook & loop front closure.
- < White 1" wide reflective material (White vest uses lime reflective material).
- < Clear plastic card holder holds 4.25" x 11" (back) and 3" x 5" card (front).

POCKETS

- < (A) Upper right chest pocket with pencil/pen division (5" wide x 5" tall).
- < (B) Inside lower right patch pocket (5.5" wide x 5.75" tall).

ONE SIZE FITS MOST

Non-ANSI Compliant

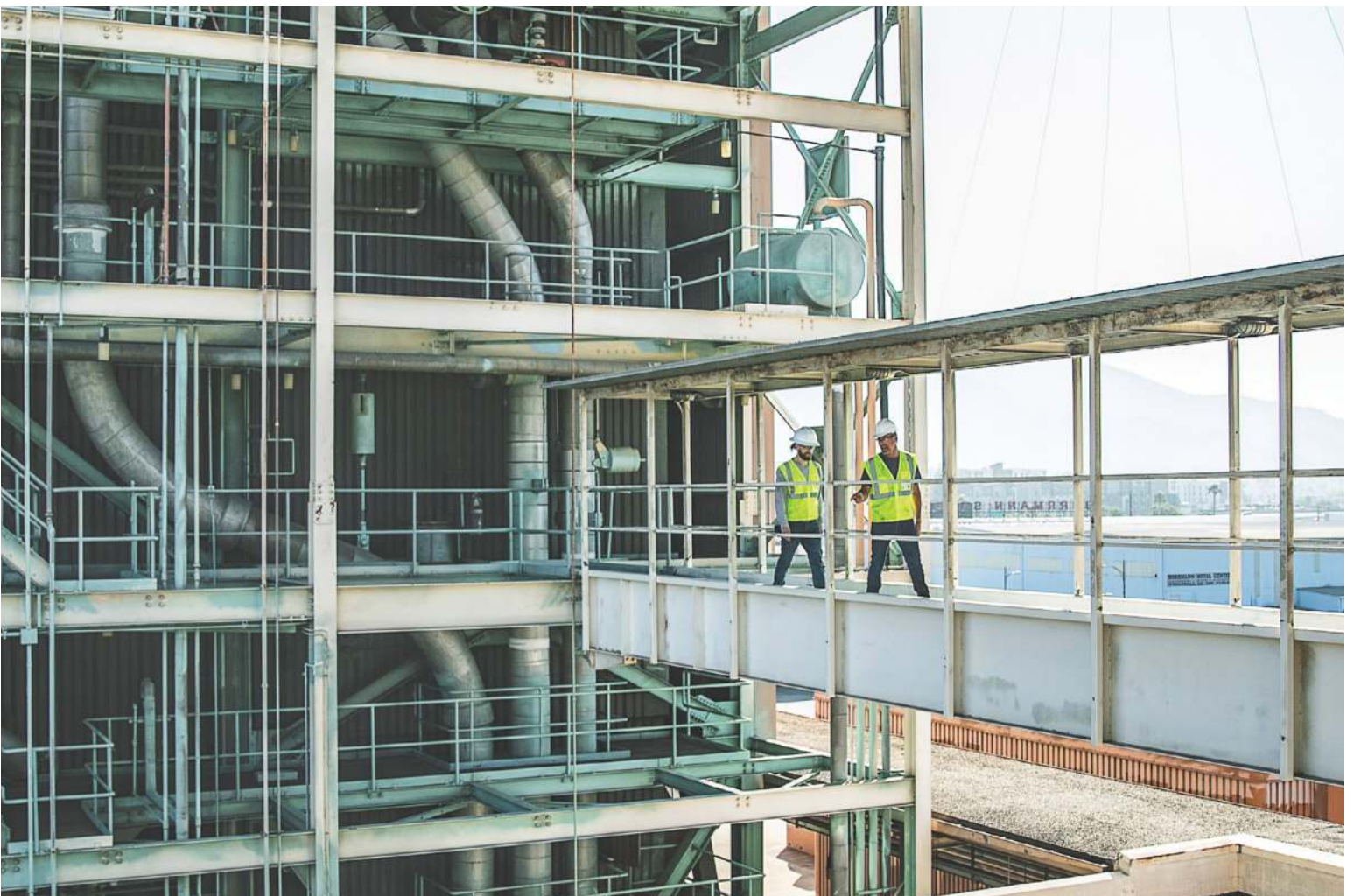


WARNING: Cancer and Reproductive Harm
P65Warnings.ca.gov

CLASS 2

“Workwear that works as hard as you do. It’s simple. I just feel safer wearing Kishigo.”

Kristina, Project Engineer



WARNING: Cancer and Reproductive Harm
P65Warnings.ca.gov

S5004 Lime
HIGH PERFORMANCE
SURVEYORS VEST



WARNING: Cancer and Reproductive Harm
P65Warnings.ca.gov

Padded collar
for comfort.

2-tier left chest
pocket can be held
up open for
quick access.

Reinforced
stress points
for added
durability.

Inside: Heavy duty
tablet (iPad) pocket
with load-bearing
strap.

Inside: Right side
full length zipper
pocket for
equipment storage.

Left and right
elastic
spray paint
can pockets.

Grommets for
flagging tape.



PREMIUM

BLACK SERIES

SURVEYORS VEST

PERFORMANCE FEATURES

- < Solid polyester front with mesh back.
- < Heavy duty black bottom and trim to help keep a clean appearance.
- < Zipper front closure reinforced with durable webbing.
- < 2" wide high performance reflective material laminated to 3" contrasting color.
- < Left and right mic tabs.
- < Two lapel grommets.
- < Padded neck for comfort.

POCKETS

- < Left chest 2-tier pocket with dual function flap that can be held open by hook & loop.
- < Large right gusseted pocket with flap.
- < Outside lower front pockets with flaps, left and right stake pockets, left and right elastic spray paint can pockets.
- < Lower inside right full length zipper pocket with load-bearing strap.
- < Lower inside left tablet (iPad) pocket with load-bearing strap.
- < Hidden back pouch with left and right zipper access.

SIZES: S-5X

(Size small only has left side mic tab)
(Size medium does not have black trim around arms - Will match garment color)

ANSI 107 Type R | Class 2 Compliant



WARNING: Cancer and Reproductive Harm
P65Warnings.ca.gov

Reflective piping on back
for enhanced low light
visibility.

Back pouch for maps and
instruments.



S5002 Lime
S5003 Orange
S5702 Fluorescent Red



WARNING: Cancer and Reproductive Harm
P65Warnings.ca.gov



S5021 Lime
S5022 Orange



S5021 Lime
S5022 Orange
Size small

PREMIUM
BLACK SERIES®

WOMEN'S HEAVY DUTY SURVEYORS VEST

PERFORMANCE FEATURES

- < Solid polyester front with mesh back.
- < Heavy duty black bottom to help keep a clean appearance.
- < Zipper Front closure with reinforced durable webbing.
- < 2" wide high performance reflective material with 3" contrast.
- < Left chest mic tab and eyeglass loop.
- < Adjustable waist cinches to ensure a personalized fit.
- < Padded neck for comfort.
- < 4" slits at hip for mobility.

POCKETS

- < Left chest 2-tier pocket with dual function flap that can be held open with hook & loop.
- < Right chest gusseted pocket with retractable ID.
- < Outside lower front slash pockets with zipper closure, left and right lower front pockets and flaps and grommets.
- < Lower inside right pocket with zipper closure.
- < Lower inside left tablet (iPad) pocket with load bearing strap.
- < Hidden back pouch with left and right zipper access.

SIZES: S-2X

(Size small has a lime bottom & 3rd horizontal reflective stripe)

ANSI 107 Type R | Class 2 Compliant



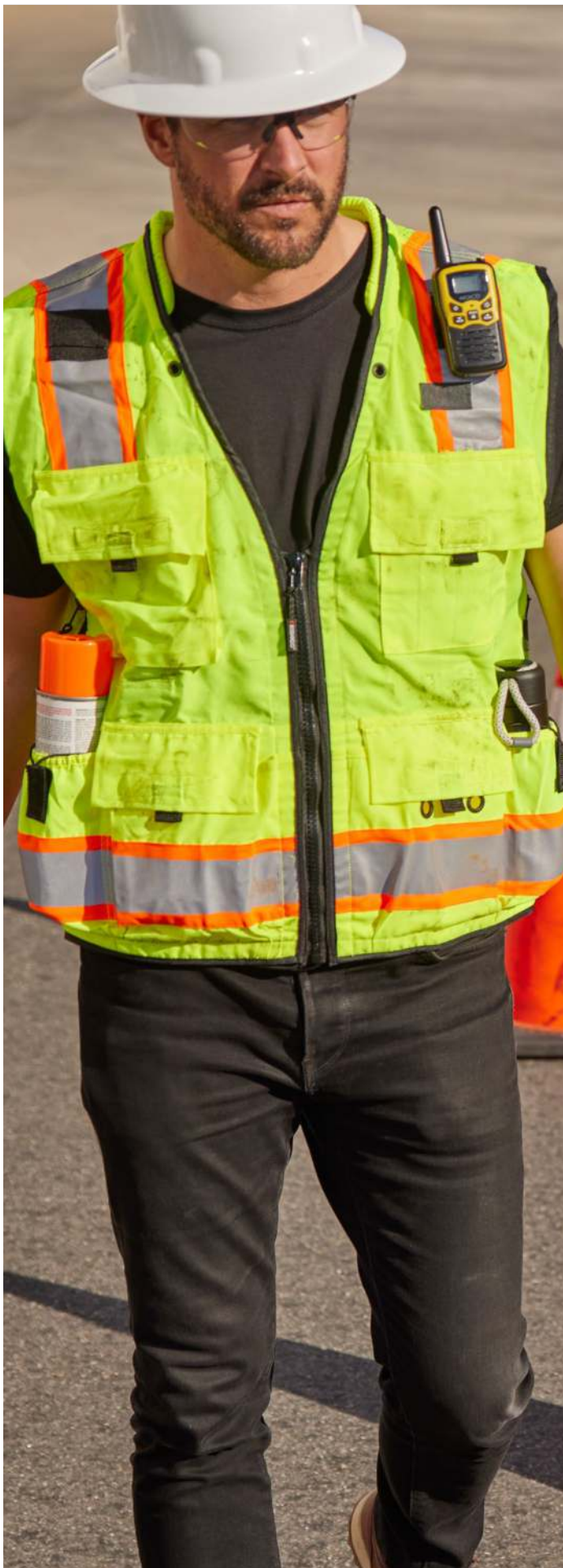
This video can be viewed in fullscreen.



A left chest
two-tier pocket



WARNING: Cancer and Reproductive Harm
P65Warnings.ca.gov



S5000 Lime
S5001 Orange

PROFESSIONAL SURVEYORS VEST

PERFORMANCE FEATURES

- < Solid polyester front with mesh back.
- < Zipper front closure reinforced with durable webbing.
- < 2" wide high performance reflective material laminated to 3" contrasting color.
- < Left and right mic tabs.
- < Two lapel grommets.
- < Padded neck for comfort.

POCKETS

- < Left chest 2-tier pocket with dual function flap that can be held open by hook & loop.
- < Large right gusseted pocket with flap.
- < Outside lower front pockets with flaps, left and right stake pockets, left and right elastic spray paint can pockets.
- < Lower inside left and right full length zipper pockets with load-bearing straps.
- < Hidden back pouch with left and right zipper access.

SIZES: S-5X

ANSI 107 Type R | Class 2 Compliant



WARNING: Cancer and Reproductive Harm
P65Warnings.ca.gov



S5008Z Lime

ECONOMY SURVEYORS VEST

PERFORMANCE FEATURES

- < Ultra-Cool 100% polyester mesh with solid pockets.
- < Zipper front closure reinforced with durable webbing.
- < 2" wide reflective material.
- < Left and right mic tabs.
- < Left and right lapel grommets.

POCKETS

- < Left chest radio pocket and clear ID holder with flap.
- < Right chest 2-tier, 4 division pencil pocket.
- < Outside left and right full length pockets.
- < Inside right chest pocket with flap.
- < Inside lower left full length pocket with load bearing strap.
- < Inside lower right full length pocket with hook and loop closure.
- < Hidden back pouch with left and right snap access.

SIZES: M-5X

ANSI 107 Type R | Class 2 Compliant



WARNING: Cancer and Reproductive Harm
P65Warnings.ca.gov

PREMIUM

BLACK SERIES®**TOOL TETHERING VEST****PERFORMANCE FEATURES**

- < Solid polyester front with mesh back.
- < Heavy duty black bottom to help keep a clean appearance.
- < Zipper front closure reinforced with durable webbing.
- < 2" wide high-performance reflective material with 2.5" contrasting black panels.
- < Reinforced left and right mic tabs.
- < Padded neck for even weight distribution and extra comfort.
- < 2 multipurpose lapel grommets.
- < 7 anchor points certified to ANSI 121-2018 standards.
- < Designed around comfort and safety with side slits for ease of movement.
- < Additional black reflective trim to help keep you visible in low light conditions.

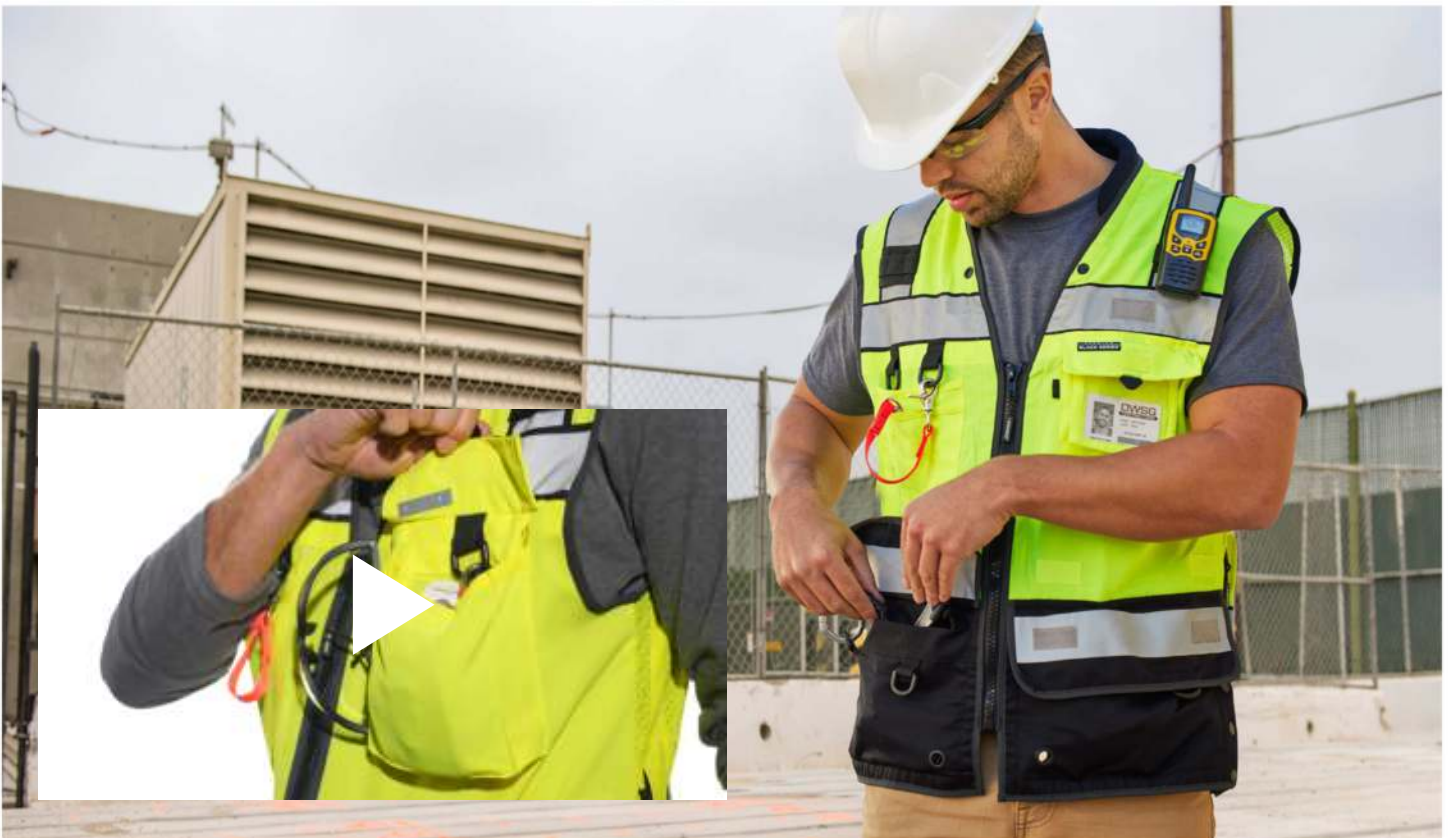
POCKETS

- < Large left chest gusseted pocket with dual-function flap that can be held open by hook & loop. Includes a retractable clear ID holder and an anchor point.
- < Right chest 2-division pocket with D-rings.
- < Lower full length multipurpose pockets that can be held open by hook & loop including reinforced anchor points for tool tethers.
- < Newly designed hidden back pouch pocket with left and right zipper access.
- < Internal double layer pockets with load bearing straps.

SIZES: M-3X

ANSI 107 Type R | Class 2 Compliant

Users to consult with authorized site personnel for procedures and safe use of such equipment.

**NEW 1820 Lime**

WARNING: Cancer and Reproductive Harm
P65Warnings.ca.gov



HIGH PERFORMANCE SURVEYORS VEST

PERFORMANCE FEATURES

- < Ultra-Cool™ 100% polyester mesh.
- < Zipper or snap front closure reinforced with durable webbing.
- < 2" wide high performance reflective material with 3" contrasting black.
- < Left and right mic tabs.
- < Padded neck for comfort.
- < Two lapel grommets.

POCKETS

- < Left chest radio pocket with clear ID holder and flap.
- < Right chest 2-tier, 4-division pencil pocket.
- < Outside left and right full length pockets with grommets.
- < Inside lower left tablet (iPad) pocket with load-bearing strap.
- < Inside lower right full length pocket.
- < Hidden back pouch with left and right zipper access.

SIZES: S-5X

(Size small only has left side mic tab)

ANSI 107 Type R | Class 2 Compliant



WARNING: Cancer and Reproductive Harm
P65Warnings.ca.gov



S5004 Lime

S5005 Orange

S5704 Fluorescent Red



WARNING: Cancer and Reproductive Harm
P65Warnings.ca.gov



COLOR CONTRAST HIGH PERFORMANCE SURVEYORS VEST

PERFORMANCE FEATURES

- < Ultra-Cool™ 100% polyester mesh.
- < Contrast matching zipper front closure reinforced with durable webbing.
- < 2" wide high performance reflective material with 3" color contrast.
- < Left and right mic tabs.
- < Contrast matching padded neck for comfort.
- < Two lapel grommets.

POCKETS

- < Left chest radio pocket with clear ID holder and flap.
- < Right chest 2-tier, 4-division pencil pocket.
- < Outside left and right full length pockets with grommets.
- < Inside lower left tablet (iPad) pocket with load-bearing strap.
- < Inside lower right full length pocket.
- < Hidden back pouch with left and right zipper access.

SIZES: S-5X

(Size small only has left side mic tab)

ANSI 107 Type R | Class 2 Compliant



S5042 Lime/Royal Blue

S5043 Lime/Red

S5044 Lime/Green

S5046 Lime/Pink



WARNING: Cancer and Reproductive Harm
P65Warnings.ca.gov



NEW 1823 Lime

Coming in July 2023

MEN'S ULTIMATE CONSTRUCTION VEST

PERFORMANCE FEATURES

- < Heavy duty solid front with Ultra-Cool™ mesh back.
- < Zipper front closure reinforced with durable webbing.
- < 2" wide high performance reflective material laminated to 3" contrasting color.
- < Left and right dual layer mic tabs.
- < 2 lapel grommets.
- < Updated padded neck design for additional comfort.
- < American flag patch that can be removed for optional self supplied company logo or name patch.

POCKETS

- < Left and right layered lower front pockets including top loading pocket with magnetic closure, slash pockets with zipper closure and storage pockets with flap and magnetic closures.
- < Two lower side water bottle pockets with adjustable cord closures.
- < Left chest 2-tier 4 division pocket with magnetic closure and an anchor point.
- < Right chest pocket with a water resistant retractable clear ID, magnetic closures and an anchor point.
- < Hidden back pouch pocket with left and right zipper access.
- < Internal chest pocket with magnetic closure.

SIZES: S-5X

ANSI 107 Type R | Class 2 Compliant



WARNING: Cancer and Reproductive Harm
P65Warnings.ca.gov



NEW 1824 Lime

Coming in July 2023

WOMEN'S ULTIMATE CONSTRUCTION VEST

PERFORMANCE FEATURES

- < Heavy duty solid front with Ultra-Cool™ mesh back.
- < Zipper front closure reinforced with durable webbing.
- < 2" wide high performance reflective material laminated to 3" contrasting color.
- < Tailored cut for a feminine fit.
- < Scooped back hem for additional comfort when bending over.
- < Left and right dual layer mic tabs.
- < 2 lapel grommets.
- < Updated padded neck design for additional comfort.
- < American flag patch that can be removed for optional self supplied company logo or name patch.

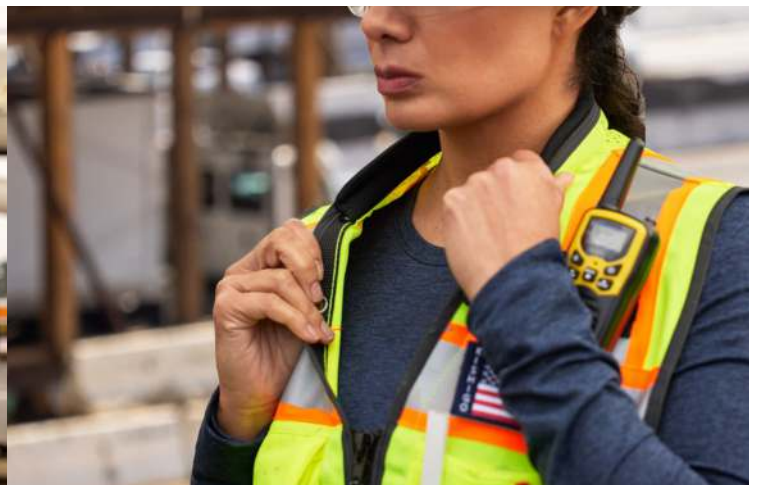
POCKETS

- < Left and right triple layered lower front pockets including top loading pocket with magnetic closure, slash pockets with zipper closure and storage pockets with flap and magnetic closures.
- < Two lower side water bottle pockets with adjustable cord closures.
- < Left chest 2-tier 4 division pocket with magnetic closure and an anchor point.
- < Right chest pocket with a water resistant retractable clear ID, magnetic closures and an anchor point.
- < Hidden back pouch pocket with left and right zipper access.
- < Internal chest pocket with magnetic closure.

SIZES: S-2X

(Size small has lower vertical panels on the back)

ANSI 107 Type R | Class 2 Compliant



WARNING: Cancer and Reproductive Harm
P65Warnings.ca.gov



PREMIUM
BRILLIANT SERIES™

ULTIMATE REFLECTIVE VEST

PERFORMANCE FEATURES

- < Ultra-Cool™ 100% polyester mesh.
- < Heavy duty black bottom front to keep vest appearance clean & professional.
- < Zipper front closure reinforced with durable webbing.
- < Two 1" wide high performance reflective material with 4.5" contrasting color.
- < Patented Brilliant Plus Reflective™ material greatly enhances worker visibility during low light and nighttime hours.
- < Brilliant Trim reflective edging improves low light visibility and provides instant differentiation between you and the work zone.
- < Left and right chest mic tabs.

POCKETS

- < Left chest radio pocket with retractable clear ID holder.
- < Two large lower slash pockets with zippers.
- < Inside right chest 2-tier, 4-division pencil pocket.
- < Inside lower left heavy duty tablet (iPad) pocket with load-bearing strap.

SIZES: M-5X

ANSI 107 Type R | Class 2 Compliant



WARNING: Cancer and Reproductive Harm
P65Warnings.ca.gov



1543 Lime

1544 Orange



Radio & clear ID chest pocket.

Inside heavy duty tablet (iPad) pocket.



WARNING: Cancer and Reproductive Harm
P65Warnings.ca.gov

Left and right chest mic tabs for quick access.

Breathable contrasting trim reduces hot spots.

Gusseted radio/utility pocket with reflective piping.



Reflective trim around arms & piping down sides and along utility pocket for added low light visibility.

Heavy duty expandable cargo pockets keep work gear in place.

Inside: Heavy duty tablet (iPad) pocket with load-bearing strap.

Inside: Zipper front closure reinforced with durable webbing for rugged wear and tear.

PREMIUM

BLACK SERIES®

BLACK BOTTOM VEST

PERFORMANCE FEATURES

- < Ultra-Cool™ 100% polyester mesh with heavy duty black bottom and trim to keep vest appearance clean & professional.
- < Zipper front closure reinforced with durable webbing.
- < 2" wide high performance reflective material with 3" breathable contrasting color.
- < Reflective trim around arms & piping down sides and along utility pocket for added low light visibility.
- < Left and right chest mic tabs.

POCKETS

- < Two lower outside heavy duty expandable cargo pockets with adjustable flaps and grommets.
- < Right chest 2-tier, 4-division pencil pocket.
- < Left chest heavy duty gusseted radio/utility pocket with reflective piping.
- < Inside lower left heavy duty tablet (iPad) pocket with load-bearing strap.
- < Inside lower right patch pocket.

SIZES: M-5X

ANSI 107 Type R | Class 2 Compliant



1515 Lime

1516 Orange



Premium Black Series featuring extra reflective piping.



WARNING: Cancer and Reproductive Harm
P65Warnings.ca.gov

PREMIUM

BLACK SERIES®

HEAVY DUTY VEST

PERFORMANCE FEATURES

- < Ultra-Cool™ 100% polyester mesh.
- < Zipper front closure reinforced with durable webbing.
- < 2" wide high performance reflective material with 3" breathable contrasting color.
- < Reflective trim around arms and piping down sides for added low light visibility.
- < Breathable black sides provide visual contrast.
- < Left and right chest mic tabs.

POCKETS

- < Two lower outside cargo pockets with adjustable flaps and grommets.
- < Right chest 2-tier pencil pocket.
- < Left chest heavy duty gusseted radio/utility pocket with reflective piping.
- < Two inside patch pockets.

SIZES: M-5X

(Size medium does not have black zipper or trim around neck and bottom - Will match garment color)

ANSI 107 Type R | Class 2 Compliant



1513 Lime

1514 Orange



WARNING: Cancer and Reproductive Harm
P65Warnings.ca.gov

PREMIUM
BRILLIANT SERIES™

ULTIMATE REFLECTIVE CONTRAST VEST

PERFORMANCE FEATURES

- < Ultra-Cool™ 100% polyester mesh with heavy duty solid bottom.
- < Zipper front closure reinforced with durable webbing.
- < 2" wide high performance reflective material with 3.25" black mesh contrast.
- < Patented Brilliant Plus Reflective™ material greatly enhances worker visibility during low light and nighttime hours.
- < Brilliant Trim reflective edging improves low light visibility and provides instant differentiation between you and the work zone.
- < Left chest mic tab.

POCKETS

- < Left chest radio pocket with retractable clear ID holder.
- < Right chest 2-tier, 4-division pocket.
- < Two lower front kangaroo patch pockets.
- < Inside lower left tablet (iPad) pocket with load bearing strap.

SIZES: M-5X

ANSI 107 Type R | Class 2 Compliant



1584 Lime



Premium Brilliant Series featuring extra reflective piping.



WARNING: Cancer and Reproductive Harm
P65Warnings.ca.gov



1595
Lime/Red



1596
Lime/Black



1597
Lime/Green



1598
Lime/Blue

REFLECTIVE COLOR CONTRAST VEST

PERFORMANCE FEATURES

- < Ultra-Cool™ Mesh with Solid Pockets.
- < 2" wide high performance reflective material with 3" Contrasting Reflective Colored Panels.
- < Reflective Colored trim on Armholes, Hem and Pockets to keep you visible in the work zone.
- < Matching contrast zipper front closure.

POCKETS

- < Left Chest Radio Pocket w/ Retractable Clear ID and Flap.
- < Two lower Kangaroo Pockets with a Zipper closure.
- < Inside Right Chest 2-Tier, 4 Division Pencil Pocket.
- < Inside Lower Left Reinforced Tablet (i-Pad) Pocket with Load Bearing Strap.

SIZES: M-5X

ANSI 107 Type R I Class 2 Compliant



This video can be viewed in fullscreen.

2" wide
high performance
reflective bands



WARNING: Cancer and Reproductive Harm
P65Warnings.ca.gov



PREMIUM

BRILLIANT SERIES®**HEAVY DUTY VEST****PERFORMANCE FEATURES**

- < Ultra-Cool™ 100% polyester mesh.
- < Brilliant Trim reflective edging improves low light visibility.
- < Zipper front closure reinforced with durable webbing.
- < 2" wide high performance reflective material with 3" breathable contrasting color.
- < Left and right chest mic tabs.

POCKETS

- < Two lower outside cargo pockets with grommets and adjustable flaps.
- < Right chest 2-tier pencil pocket.
- < Left chest radio pocket with flap.
- < Two inside patch pockets.

SIZES: S-5X (Size small only has left mic tab)

ANSI 107 Type R | Class 2 Compliant

**1510** Lime**1511** Orange**1710** Fluorescent Red

WARNING: Cancer and Reproductive Harm
P65Warnings.ca.gov



1195 Lime
1196 Orange



1586 Lime

ALL MESH CONTRAST VEST

PERFORMANCE FEATURES

- < Ultra-Cool™ 100% polyester mesh.
- < Zipper front closure.
- < 2" wide high performance reflective material with 3" breathable contrasting color.
- < Left and right chest mic tabs.

POCKETS

- < Two lower outside patch pockets with flaps.
- < Right chest 2-tier pencil pocket.
- < Left chest radio pocket with flap.
- < Two inside patch pockets.

SIZES: S-5X

(Size small only has left mic tab)

ANSI 107 Type R | Class 2 Compliant

WOMEN'S ALL MESH CONTRAST VEST

PERFORMANCE FEATURES

- < Ultra-Cool™ 100% polyester mesh.
- < Zipper front closure.
- < 2" wide high performance reflective material with 3" contrasting color for added daytime visibility.
- < Elastic waist cinches to ensure a tailored fit.
- < 4" slits at hip for mobility.
- < Left and right chest mic tabs.

POCKETS

- < Two lower outside patch pockets with flaps.
- < Right chest 2-tier pencil pocket.
- < Left chest radio pocket with flap.
- < Two lower patch pockets with flaps.
- < Two inside patch pockets.

SIZES: S-2X

(Size small only has left mic tab)

ANSI 107 Type R | Class 2 Compliant



1576 Lime
1577 Orange

PREMIUM
BRILLIANT SERIES®

X BACK DUAL COMPLIANT VEST

PERFORMANCE FEATURES

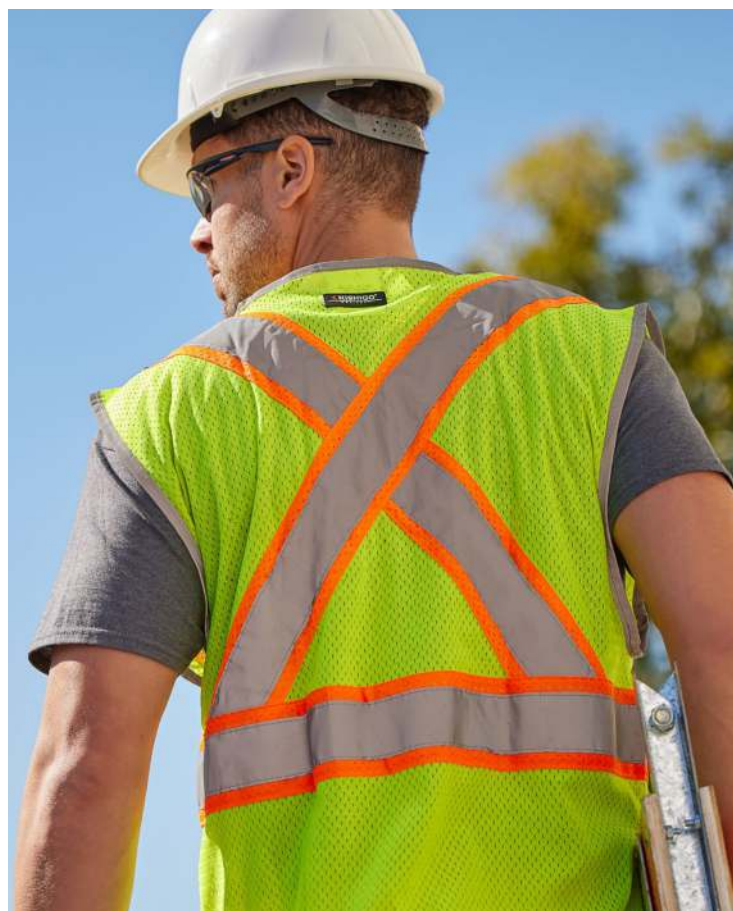
- < Ultra-Cool™ 100% polyester mesh.
- < Brilliant Trim reflective edging improves low light visibility.
- < Zipper front closure.
- < X back configuration.
- < 2" wide high performance reflective material with 3" contrasting color.
- < Left chest mic tab.

POCKETS

- < Two lower outside patch pockets with flaps.
- < Inside right chest 2-division pocket.
- < Left chest radio pocket with hook & loop tab closure.

SIZES: S-M, L-XL, 2X-3X, 4X-5X

ANSI 107 Type R | CSA Z96 | Class 2 Compliant



WARNING: Cancer and Reproductive Harm
P65Warnings.ca.gov

1195 Lime
ALL MESH
CONTRAST VEST

1586 Lime
WOMEN'S
ALL MESH
CONTRAST VEST



WARNING: Cancer and Reproductive Harm
P65Warnings.ca.gov



1163 Lime
1164 Orange

SOLID FRONT WITH MESH BACK VEST

PERFORMANCE FEATURES

- < Comfortable Ultra-Cool™ 100% polyester mesh material on back with solid front.
- < Zipper front closure.
- < 2" wide high performance reflective material with 3" contrasting color.
- < Left and right chest mic tabs.

POCKETS

- < Two lower outside patch pockets with flaps.
- < Right chest 2-tier, 4-division pocket.
- < Left chest radio pocket with flap.
- < Two lower inside patch pockets.

SIZES: S-5X

(Size small only has left mic tab)

ANSI 107 Type R | Class 2 Compliant



1056 Lime
1055 Orange

CONTRASTING MESH VEST

PERFORMANCE FEATURES

- < Ultra-Cool™ 100% polyester mesh.
- < Zipper front closure.
- < 2" wide high performance reflective material with 4.5" contrasting color.
- < Left chest mic tab.

POCKETS

- < Inside left chest 2-tier, 4-division pencil pocket.
- < Lower right inside patch pocket.

SIZES: S-5X

ANSI 107 Type R | Class 2 Compliant



WARNING: Cancer and Reproductive Harm
P65Warnings.ca.gov



1580 Lime
1581 Orange

6 POCKET CONTRAST VEST

Economy

PERFORMANCE FEATURES

- < 100% polyester mesh back with solid front.
- < Zipper front closure.
- < 2" wide reflective material with 3" contrasting material.
- < Left chest mic tab.
- < Reinforced D-ring access on back.

POCKETS

- < Two lower outside patch pockets with flaps.
- < Right chest 2-tier, 4-division pocket.
- < Left chest radio pocket with hook & loop closure.
- < Two inside lower patch pockets.

SIZES: S-M, L-XL, 2X-3X, 4X-5X

ANSI 107 Type R | Class 2 Compliant



1527 Lime
1528 Orange

SINGLE POCKET CONTRAST MESH VEST

Economy

PERFORMANCE FEATURES

- < 100% polyester mesh.
- < Zipper front closure.
- < 2" wide reflective material with 3" contrasting color.
- < Left chest mic tab.

POCKETS

- < Left chest pocket.

SIZES: S-M, L-XL, 2X-3X, 4X-5X

ANSI 107 Type R | Class 2 Compliant



WARNING: Cancer and Reproductive Harm
P65Warnings.ca.gov



1197 Lime
1198 Orange

COMBINED PERFORMANCE 5 POCKET SOLID VEST

PERFORMANCE FEATURES

- < 100% polyester solid material.
- < Zipper front closure.
- < 2" wide ORALITE® combined performance prismatic reflective material.
- < Left chest mic tab.

POCKETS

- < Left chest radio pocket with hook & loop strap.
- < Right chest 2-tier, 3-division pencil pocket.
- < Two lower pockets with zipper closures.
- < One large inside lower left patch pocket.

SIZES: S-5X

ANSI 107 Type R | Class 2 Compliant



1076 Lime
1077 Orange

ORALITE® ALL MESH VEST

PERFORMANCE FEATURES

- < Ultra-Cool™ 100% polyester mesh.
- < Zipper front closure.
- < 2" wide ORALITE® prismatic reflective material.
- < Left and right chest mic tabs.

POCKETS

- < Outside left chest 2-tier, 4-division pencil pocket.
- < Inside lower right patch pocket.

SIZES: S-5X

(Size small only available in Orange)

ANSI 107 Type R | Class 2 Compliant

ORALITE®



WARNING: Cancer and Reproductive Harm
P65Warnings.ca.gov



PREMIUM

BRILLIANT SERIES™**WOMEN'S FITTED VEST****PERFORMANCE FEATURES**

- < Ultra-Cool™ 100% polyester mesh back and sides with lightweight solid front.
- < Zipper front closure.
- < 2" wide high performance reflective material.
- < Brilliant Trim and reflective piping around arms & down sides for added low light visibility.
- < Adjustable waist cinches to ensure a perfect fit.

POCKETS

- < Two hidden lower outside slash pockets with zipper closures.
- < Inside ergonomically positioned lower left radio pocket with flap.

LADIES SIZES: S, M, L, XL

ANSI 107 Type R | Class 2 Compliant

**1521** Lime

WARNING: Cancer and Reproductive Harm
P65Warnings.ca.gov



1191 Lime
1192 Orange

6 POCKET MESH VEST

Economy

PERFORMANCE FEATURES

- < 100% polyester mesh material with solid polyester pockets.
- < Zipper front closure.
- < 2" wide reflective material.
- < Left chest mic tab.

POCKETS

- < Two lower outside patch pockets with flaps.
- < Right chest 2-division pocket.
- < Left chest 4-division pocket.
- < Two inside patch pockets.

SIZES: S-M, L-XL, 2X-3X, 4X-5X

ANSI 107 Type R | Class 2 Compliant



1083 Lime
1084 Orange

4 POCKET HOOK & LOOP MESH VEST

PERFORMANCE FEATURES

- < Ultra-Cool™ 100% polyester mesh.
- < 4" hook & loop front closure.
- < 2" wide high performance reflective material.
- < Left chest mic tab.

POCKETS

- < Outside right chest 2-tier pencil pocket.
- < Outside left chest patch pocket.
- < Two large lower inside patch pockets.

SIZES: S-5X

(Size small left chest pocket is on inside of vertical tape)

ANSI 107 Type R | Class 2 Compliant



1085 Lime
1086 Orange

3 POCKET ZIPPER MESH VEST

PERFORMANCE FEATURES

- < Ultra-Cool™ 100% polyester mesh.
- < Zipper front closure.
- < 2" wide high performance reflective material.
- < Left chest mic tab.

POCKETS

- < Outside left chest radio pocket with hook & loop tab.
- < Inside right chest 2-tier, 4-division pencil pocket.
- < Lower inside left patch pocket.

SIZES: S-5X

ANSI 107 Type R | Class 2 Compliant



1089 Lime
1090 Orange

SINGLE POCKET ZIPPER MESH VEST

PERFORMANCE FEATURES

- < Ultra-Cool™ 100% polyester mesh.
- < Zipper front closure.
- < 2" wide high performance reflective material.
- < Left chest mic tab.

POCKETS

- < Outside left chest pocket.

SIZES: M-5X

ANSI 107 Type R | Class 2 Compliant



WARNING: Cancer and Reproductive Harm
P65Warnings.ca.gov



1509 Lime
1529 Orange

BLACK BOTTOM MESH VEST

PERFORMANCE FEATURES

- < 100% polyester mesh material.
- < Solid black polyester on lower front.
- < Zipper front closure.
- < 2" wide high performance reflective material.
- < Left and right chest mic tabs.

POCKETS

- < Two lower front solid patch pockets with flaps.
- < Left chest radio pocket.
- < Right chest 2-tier pocket.
- < Two large lower inside pockets.

SIZES: S-M, L-XL, 2X-3X, 4X-5X

ANSI 107 Type R | Class 2 Compliant



1532 Lime

CLEAR ID VEST

PERFORMANCE FEATURES

- < Ultra-Cool™ 100% polyester mesh.
- < Zipper front closure.
- < 2" wide high performance reflective material.
- < Left chest mic tab.

POCKETS

- < Left chest radio pocket with clear ID holder and flap.
- < Inside right chest 2-tier, 4-division pencil pocket.
- < Lower inside left reinforced tablet (iPad) pocket with load-bearing strap.

SIZES: S-M, L-XL, 2X-3X, 4X-5X

ANSI 107 Type R | Class 2 Compliant



WARNING: Cancer and Reproductive Harm
P65Warnings.ca.gov



FM419 Lime

CHEMICALLY TREATED POLYESTER MESH VEST

PERFORMANCE FEATURES

- < Chemically treated Ultra-Cool™ 100% polyester mesh material.
- < Non-sparking zipper front closure.
- < 2" wide reflective material.

POCKETS

- < Outside left chest radio pocket with hook & loop tab.
- < Inside right chest 2-tier, 4-division pencil pocket.
- < Two lower inside patch pockets.

SIZES: M-5X

ANSI 107 Class 2 Compliant

Does not meet ANSI FR Requirements
 Test Method: D6413/Less than 2 seconds after flame,
 less than 6" char length



1193 Lime
1194 Orange

SINGLE POCKET HOOK & LOOP MESH VEST

Economy

PERFORMANCE FEATURES

- < 100% polyester mesh.
- < 4" hook & loop front closure.
- < 2" wide reflective material.
- < Left chest mic tab.

POCKETS

- < Left chest pocket.

SIZES: S-M, L-XL, 2X-3X, 4X-5X

ANSI 107 Type R | Class 2 Compliant



1571 Lime
1572 Orange

HOOK & LOOP MESH VEST

Economy

PERFORMANCE FEATURES

- < 100% polyester mesh.
- < 4" hook & loop front closure.
- < 2" wide reflective material.

SIZES: S-M, L-XL, 2X-3X, 4X-5X

ANSI 107 Type R | Class 2 Compliant



1547 Lime
1548 Orange

ZIPPER MESH VEST

Economy

PERFORMANCE FEATURES

- < 100% polyester mesh.
- < Zipper front closure.
- < 2" wide reflective material.

SIZES: S-M, L-XL, 2X-3X, 4X-5X

ANSI 107 Type R | Class 2 Compliant



WARNING: Cancer and Reproductive Harm
 P65Warnings.ca.gov



1537 Lime
1538 Orange

2 POCKET ZIPPER MESH VEST

Economy

PERFORMANCE FEATURES

- < 100% polyester mesh.
- < Zipper front closure.
- < 2" wide reflective material.

POCKETS

- < Left chest pocket.
- < Lower inside right patch pocket.

SIZES: S-5X

ANSI 107 Type R | Class 2 Compliant



1519 Lime
1520 Orange
1719 Fluorescent Red

SINGLE POCKET ZIPPER MESH VEST

Economy

PERFORMANCE FEATURES

- < 100% polyester mesh.
- < Zipper front closure.
- < 2" wide reflective material.
- < Left chest mic tab.

POCKETS

- < Left chest pocket.

SIZES: S-M, L-XL, 2X-3X, 4X-5X

ANSI 107 Type R | Class 2 Compliant





FR BLACK BOTTOM MESH VEST

PERFORMANCE FEATURES

- < Modacrylic blend Flame Resistant GlenGuard® mesh material.
- < 2" wide high performance breathable reflective material greatly reduces hot spots.
- < Westex Indura® FR black bottom and trim helps keep the vest clean and enhance worker's appearance.
- < Nomex® high temp FR zipper.
- < FR reflective piping.
- < Optional D-Ring access also available (Part # FM410D - Allow 1-2 weeks lead time).

POCKETS

- < Two lower inside patch pockets.
- < Left chest inside 2-tier, 4-division pencil pocket.

SIZES: M-5X

NFPA 70E-2012 | ASTM F1506 | CAT 1
Arc Rating/ATPV: 4.6 cal/cm²

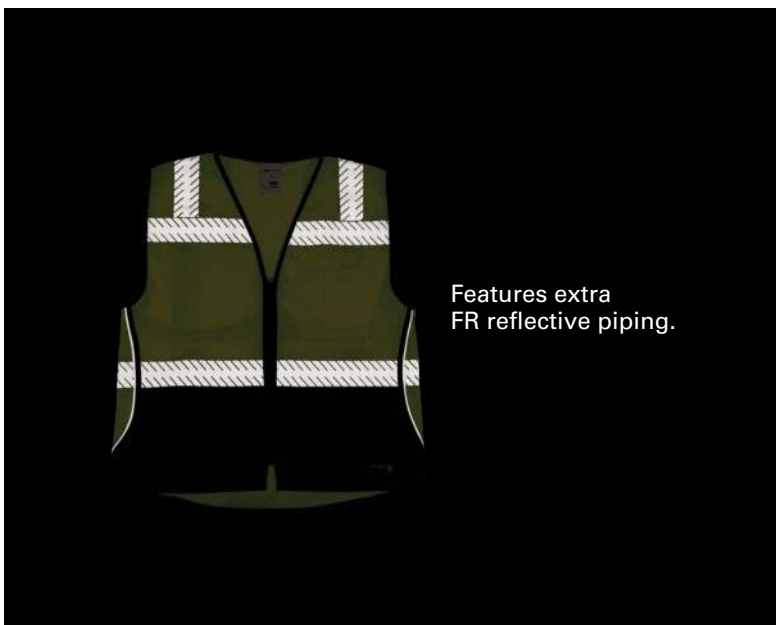
ANSI 107 Type R | Class 2 Compliant



FM410 Lime



GlenGuard® Hi-Vis is a registered trademark of Glen Raven, Inc.



Features extra
FR reflective piping.





FM389 Lime

FR BREATHABLE MESH VEST

PERFORMANCE FEATURES

- < Modacrylic blend Flame Resistant GlenGuard® mesh material.
- < 2" wide high performance breathable reflective material.
- < Flame Resistant hook & loop front closure.

POCKETS

- < Two lower inside patch pockets.
- < Left chest inside 2-tier, 4-division pocket.

SIZES: M-5X

NFPA 70E-2012 | ASTM F1506 | CAT 1
Arc Rating/ATPV: 4.6 cal/cm²

ANSI 107 Type R | Class 2 Compliant



F442 Lime

Westex®
DH

FR ARC VEST

PERFORMANCE FEATURES

- < Modacrylic blend Flame Resistant solid material.
- < FR hook & loop front closure.
- < 2" wide laminated reflective material.

POCKETS

- < Two lower inside patch pockets.
- < One inside left chest 2-tier, 4-division pencil pocket.

SIZES: M-5X

NFPA 70E-2012 | ASTM F1506
Arc Rating/ATPV: 8.9 cal/cm²

ANSI 107 Type R | Class 2 Compliant



WARNING: Cancer and Reproductive Harm
P65Warnings.ca.gov

CLASS 3

"I have been using Kishigo for roughly 14 years. We have tested many different brands. When you have associates swapping out from type 2 to type 3 based on regulations working on the highway, you need a partner who understands fit and functionality. Kishigo is that Partner."

Conrad, Safety Director

PREMIUM
BRILLIANT SERIES®

1822 Lime
WOMEN'S
HEAVY DUTY
VEST



WARNING: Cancer and Reproductive Harm
P65Warnings.ca.gov

PREMIUM

BRILLIANT SERIES®

1550 Lime
HEAVY DUTY VEST

WARNING: Cancer and Reproductive Harm
P65Warnings.ca.gov

PREMIUM
BRILLIANT SERIES®

ULTIMATE REFLECTIVE CLASS 3 VEST

PERFORMANCE FEATURES

- < Ultra-Cool™ 100% polyester mesh with heavy duty solid bottom front.
- < Zipper front closure reinforced with durable webbing.
- < Two 1" wide high performance reflective material with 4.5" contrasting color.
- < Patented Brilliant Plus Reflective™ material greatly enhances worker visibility during low light and nighttime hours.
- < Brilliant Trim reflective edging improves low light visibility and provides instant differentiation between you and the work zone.
- < Left and right chest mic tabs.

POCKETS

- < Left chest radio pocket with retractable clear ID holder.
- < Two large lower slash pockets with zippers.
- < Inside right chest 2-tier, 4-division pencil pocket.
- < Inside lower left heavy duty tablet pocket with load-bearing strap.

SIZES: M-5X

ANSI 107 Type R | Class 3 Compliant



1573 Lime

1574 Orange



WARNING: Cancer and Reproductive Harm
P65Warnings.ca.gov



1550 Lime
1551 Orange

PREMIUM
BRILLIANT SERIES®

HEAVY DUTY VEST

PERFORMANCE FEATURES

- < Ultra-Cool™ 100% polyester mesh with solid pockets.
- < Brilliant Trim reflective edging improves low light visibility.
- < Zipper front closure reinforced with durable webbing.
- < 2" wide high performance reflective material with 3" Ultra-Cool™ contrasting mesh.
- < Left and right chest mic tabs.
- < Two lapel grommets.

POCKETS

- < Outside right chest 2-tier, 4-division pocket.
- < Left chest radio pocket with flap.
- < Inside lower patch pockets.
- < Two lower outside cargo pockets with flaps and grommets.

SIZES: S-5X

ANSI 107 Type R | Class 3 Compliant



1242 Lime
1243 Orange

6 POCKET CONTRAST MESH VEST

PERFORMANCE FEATURES

- < Ultra-Cool™ 100% polyester mesh with solid pockets.
- < Zipper front closure.
- < 2" wide high performance reflective material with 3" contrasting mesh.
- < Left chest mic tab.

POCKETS

- < Outside left chest radio pocket.
- < Outside right chest 2-tier, 3-division pocket.
- < Inside lower patch pockets.
- < Two lower outside solid material patch pockets with flaps.

SIZES: S-5X

(Size small back vertical tape extends to bottom of vest)

ANSI 107 Type R | Class 3 Compliant



WARNING: Cancer and Reproductive Harm
P65Warnings.ca.gov



PROFESSIONAL SURVEYORS VEST

PERFORMANCE FEATURES

- < Solid polyester front with mesh back.
- < Zipper front closure reinforced with durable webbing.
- < 2" wide high performance reflective material laminated to 3" contrasting color.
- < Left and right mic tabs.
- < Two lapel grommets.
- < Padded neck for comfort.

POCKETS

- < Left chest 2-tier pocket with dual function flap that can be held open by hook & loop.
- < Large right gusseted pocket with flap.
- < Outside lower front pockets with flaps, left and right stake pockets, left and right elastic spray paint can pockets.
- < Lower inside left and right full length zipper pockets with load-bearing straps.
- < Hidden back pouch with left and right zipper access.

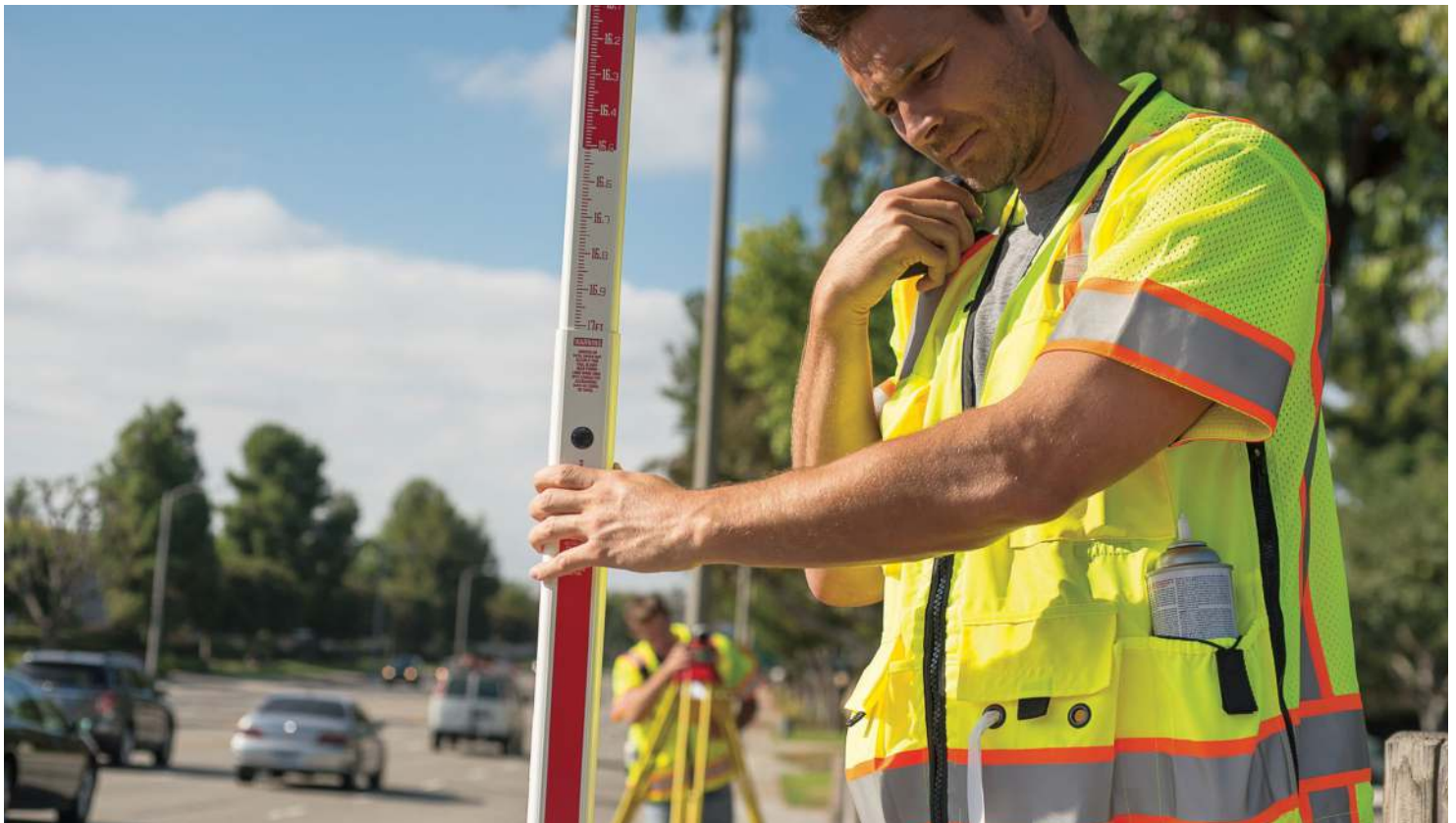
SIZES: M-5X

ANSI 107 Type R | Class 3 Compliant



S5010 Lime

S5011 Orange



WARNING: Cancer and Reproductive Harm
P65Warnings.ca.gov



HIGH PERFORMANCE SURVEYORS VEST

PERFORMANCE FEATURES

- < 100% polyester mesh material.
- < Zipper front closure reinforced with durable webbing.
- < 2" wide high performance reflective material with 2.5" contrasting black.
- < Padded neck for comfort when vest is loaded down with tools.
- < Left and right mic tabs.
- < Two lapel grommets.

POCKETS

- < Right chest 2-tier, 4-division pencil pocket.
- < Left chest radio pocket with clear ID pocket and flap.
- < Outside left and right full length pockets with grommets.
- < Lower left inside full length tablet (iPad) pocket with load bearing strap.
- < Lower right inside full length pocket.
- < Hidden back pouch with left and right zipper access.

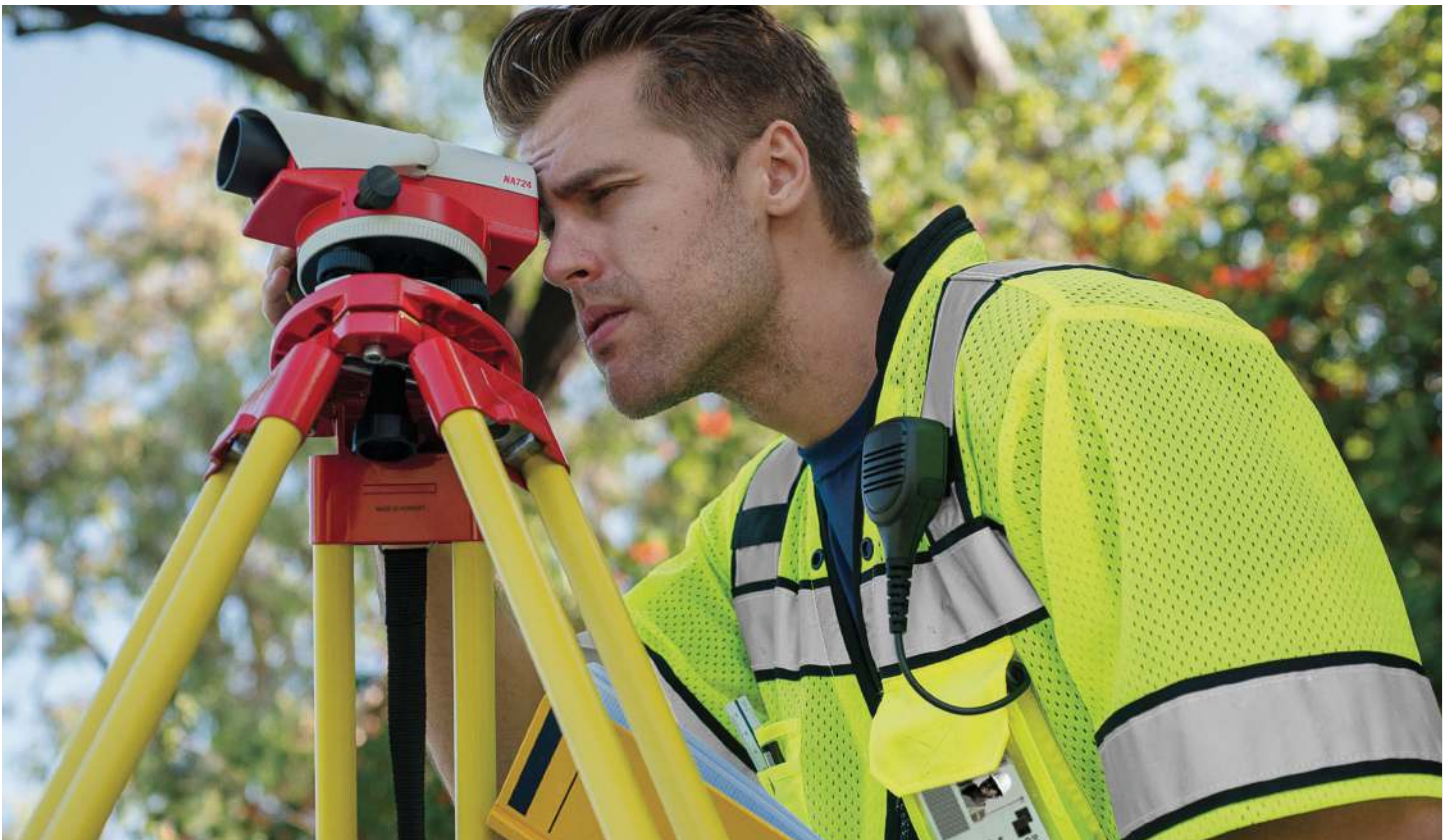
SIZES: M-5X

ANSI 107 Type R | Class 3 Compliant



S5014 Lime

S5015 Orange



WARNING: Cancer and Reproductive Harm
P65Warnings.ca.gov

PREMIUM

BRILLIANT SERIES®

WOMEN'S VEST

PERFORMANCE FEATURES

- < Ultra-Cool™ 100% polyester mesh upper front and back with lower front solid pockets.
- < Zipper front closure reinforced with durable webbing.
- < 2" wide high performance reflective material on top of a breathable contrast panel for added daytime visibility.
- < Brilliant Trim reflective edging improves low light visibility.
- < Updated padded neck design for additional comfort.
- < Elastic waist cinches to ensure a tailored fit.
- < 4" slits at hip for mobility.
- < Left and right chest mic tabs.
- < Two lapel grommets.

POCKETS

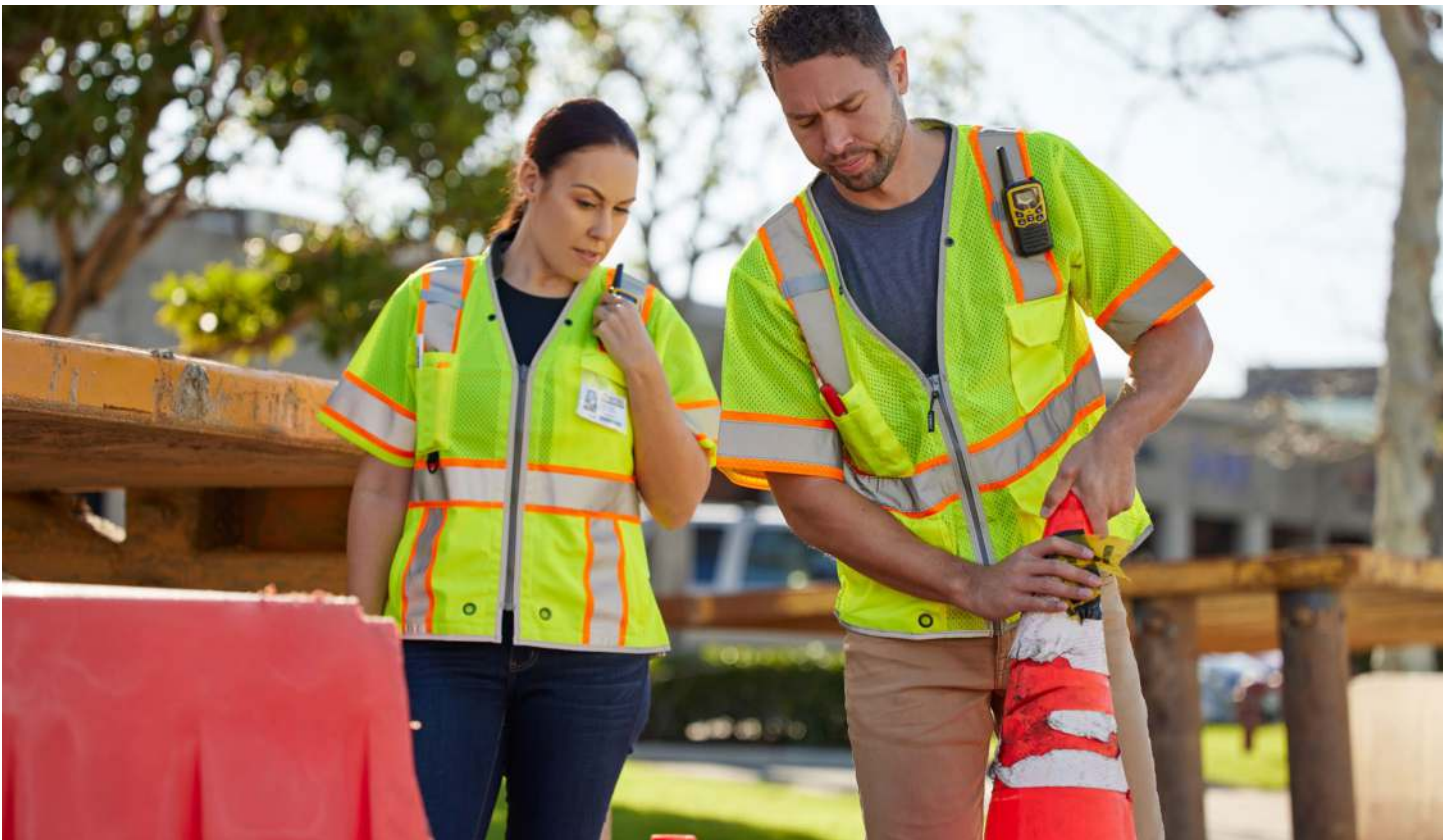
- < Two outside lower welt pockets with zipper closures and grommets.
- < Right chest 2-tier 3 division pencil pocket with an anchor point.
- < Left chest welt pocket with a zipper closure and a retractable clear ID.
- < Inside media compatible pocket.

SIZES: S-M, L-XL, 2X-3X

ANSI 107 Type R | Class 3 Compliant



NEW 1822 Lime



WARNING: Cancer and Reproductive Harm
P65Warnings.ca.gov



1565 Lime
1566 Orange

SINGLE POCKET CONTRASTING MESH VEST

Economy

PERFORMANCE FEATURES

- < 100% polyester mesh.
- < Zipper front closure.
- < 2" wide reflective material with 3" contrasting color.
- < Left chest mic tab.

POCKETS

- < Left chest pocket.

SIZES: S-M, L-XL, 2X-3X, 4X-5X

ANSI 107 Type R | Class 3 Compliant



ALL MESH VEST

Economy

PERFORMANCE FEATURES

- < Ultra-Cool™ 100% polyester mesh.
- < Zipper front closure.
- < 2" wide reflective material.
- < Left chest mic tab.

POCKETS

- < Outside left chest radio pocket.
- < Inside lower left patch pocket with hook and loop tabs.
- < Inside right chest 2-tier, 4-division pocket.

SIZES: M-5X

ANSI 107 Type R | Class 3 Compliant



1264 Lime
1265 Orange

ORALITE®



WARNING: Cancer and Reproductive Harm
P65Warnings.ca.gov

BREAKAWAY

“Down where I work, people don’t get injured, people get killed if they’re not safe. Making sure they know where I am, having workwear like Kishigo helps everybody stay visible and stay safe.”

Nathan, Longshoreman

1805 Lime
SINGLE POCKET
BREAKAWAY VEST



WARNING: Cancer and Reproductive Harm
P65Warnings.ca.gov

1174 Lime
CONTRASTING
MESH BREAKAWAY
VEST



WARNING: Cancer and Reproductive Harm
P65Warnings.ca.gov



Brilliant Trim Reflective
Edging with 360
Degree Visibility



WARNING: Cancer and Reproductive Harm
P65Warnings.ca.gov



PREMIUM
BRILLIANT SERIES®

BREAKAWAY CLASS 3 VEST

PERFORMANCE FEATURES

- < Ultra-Cool™ 100% polyester mesh material.
- < Brilliant Trim reflective edging improves low light visibility.
- < Hook & loop front reinforced with durable webbing.
- < 5-point breakaway on shoulders, sides and front closure.
- < 2" wide high performance reflective material on 3" contrasting color.
- < Left and right chest mic tabs.
- < Two lapel grommets.

POCKETS

- < Outside right chest 2-tier, 4-division pocket.
- < Outside left chest multi-use cell pocket.
- < Inside lower patch pockets.
- < Two lower outside cargo pockets with adjustable flaps and grommets.

SIZES: S-5X

(Size small chest pockets are inside vertical reflective stripes)

ANSI 107 Type R | Class 3 Compliant



1552B Lime
1553B Orange



WARNING: Cancer and Reproductive Harm
P65Warnings.ca.gov



1174 Lime
1176 Orange

CONTRASTING MESH BREAKAWAY VEST

PERFORMANCE FEATURES

- < Ultra-Cool™ 100% polyester mesh.
- < 5-point breakaway on shoulders, sides and front closure.
- < 2" wide high performance reflective material with 4.5" contrasting color.
- < Left chest mic tab.

POCKETS

- < Inside left chest 2-tier, 4-division pencil pocket.
- < Inside lower left patch pocket.
- < Inside right chest cell phone pocket.

SIZES: S-5X

ANSI 107 Type R | Class 2 Compliant



1166BA Lime

4 SEASON BREAKAWAY VEST

PERFORMANCE FEATURES

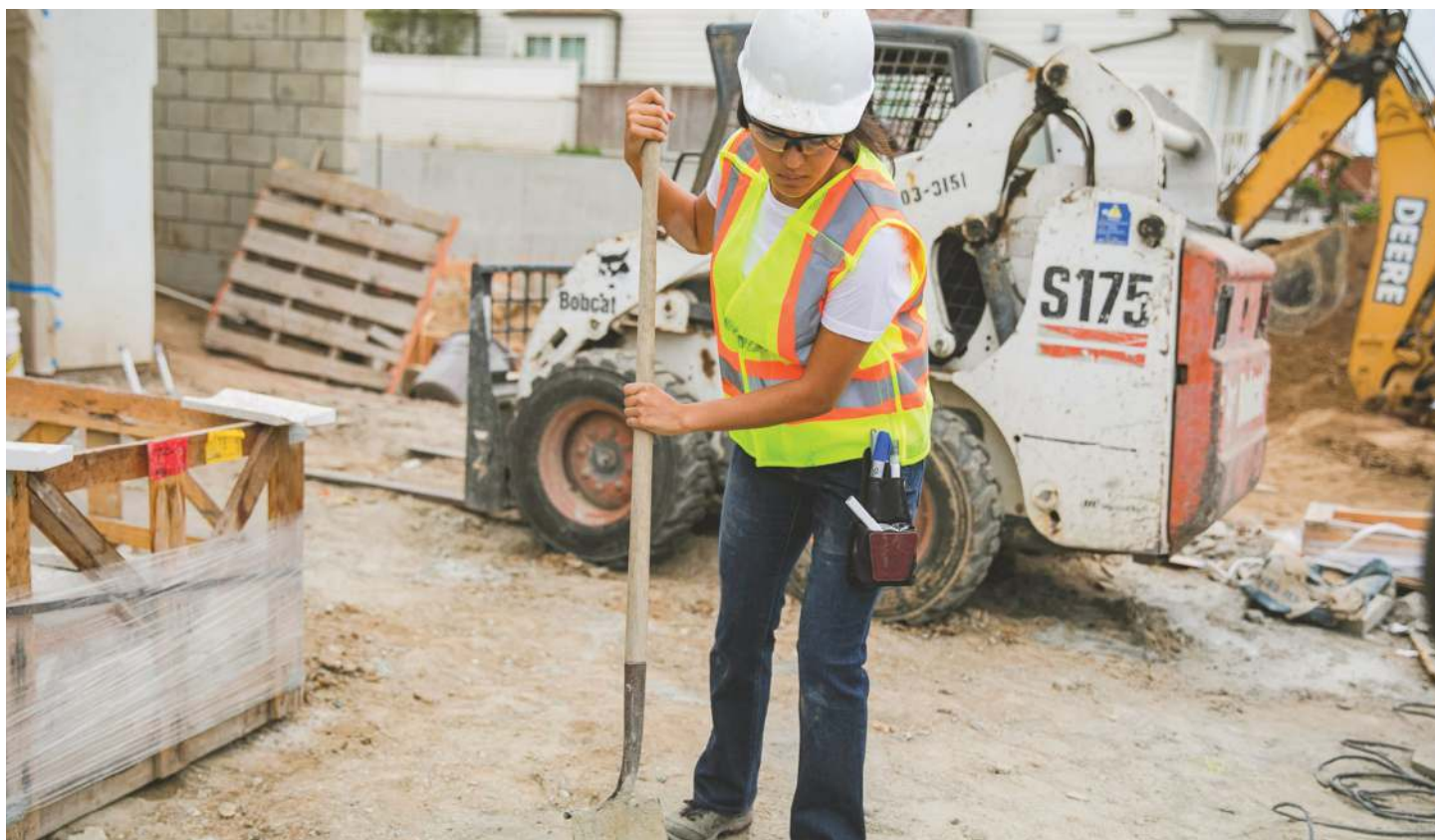
- < Ultra-Cool™ 100% polyester mesh.
- < 4-season adjustability for accurate sizing in any weather even over bulky coats.
- < 5-point breakaway on shoulders, sides and front closure.
- < Hook & loop front closure.
- < Two 1" wide high performance reflective material with 4.5" contrasting color.
- < Left chest mic tab.

POCKETS

- < Inside right chest 2-tier pencil/cell pocket.
- < Two inside lower patch pockets.
- < Outside left chest 2-tier pencil pocket.

SIZES: M-XL, 2X-4X

ANSI 107 Type R | Class 2 Compliant



WARNING: Cancer and Reproductive Harm
P65Warnings.ca.gov



1805 Lime
1806 Orange

SINGLE POCKET BREAKAWAY VEST

Economy

PERFORMANCE FEATURES

- < 100% polyester mesh.
- < 5-point breakaway on shoulders, sides and front closure.
- < 2" wide reflective material.
- < X-Back configuration.

POCKETS

- < Clear ID insert on upper left chest.

SIZES: S-M, L-XL, 2X-3X, 4X-5X

ANSI 107 Type R | Class 2 Compliant



1535 Lime
1536 Orange

SINGLE POCKET BREAKAWAY VEST

Economy

PERFORMANCE FEATURES

- < 100% polyester mesh.
- < 5-point breakaway on shoulders, sides and front closure.
- < 2" wide reflective material.
- < Left chest mic tab.

POCKETS

- < Left chest pocket.

SIZES: S-M, L-XL, 2X-3X, 4X-5X

ANSI 107 Type R | Class 2 Compliant



WARNING: Cancer and Reproductive Harm
P65Warnings.ca.gov

ENHANCED VISIBILITY

“There is no typical day in my job in my work field, I manage a large, diverse group of people. My job is to ensure they are compliant, wearing the right workwear is key.”

Justin, Warehouse Manager



ENHANCED VISIBILITY

EV SERIES®

B102 Blue/Lime
MULTI POCKET
MESH VEST



WARNING: Cancer and Reproductive Harm
P65Warnings.ca.gov

ENHANCED VISIBILITY

EV SERIES®

B103 Red/Lime
ENHANCED VISIBILITY
MULTI POCKET
MESH VEST



WARNING: Cancer and Reproductive Harm
P65Warnings.ca.gov



B100
Black/Lime



B102
Royal Blue/Lime



B103
Red/Lime



B104
Green/Lime



B105
White/Lime



B106
Yellow/Orange



B107
Pink/Lime



B108
Brown/Lime



B109
Purple/Lime



B110
Electric Blue/Lime



B111
Gray/Lime

ENHANCED VISIBILITY

EV SERIES®

ENHANCED VISIBILITY MULTI POCKET MESH VEST

PERFORMANCE FEATURES

- < 100% polyester mesh.
- < Zipper front closure reinforced with durable webbing.
- < 2" wide high performance reflective material with 3" high visibility contrasting lime.
- < Left and right chest mic tabs.
- < 2 lapel grommets.

POCKETS

- < Two lower outside cargo pockets with adjustable flaps and grommets for flagging tape.
- < Right chest 2-tier pencil pocket.
- < Left chest radio and clear ID pocket with flap.
- < Two inside patch pockets.

SIZES: S-M, L-XL, 2X-3X, 4X-5X

Non-ANSI Compliant



WARNING: Cancer and Reproductive Harm
P65Warnings.ca.gov



ENHANCED VISIBILITY

EV SERIES®

ENHANCED VISIBILITY MESH VEST

Economy

PERFORMANCE FEATURES

- < 100% polyester mesh.
- < 4" wide hook & loop front closure.
- < 2" wide reflective material.
- < Left chest mic tab.

POCKETS

- < Left chest pocket.

SIZES: S-M, L-XL, 2X-3X, 4X-5X

Non-ANSI Compliant



B120
Black



B121
Royal Blue



B122
Red



B123
Green



B124
White



B125
Yellow



B126
Pink



B127
Navy Blue



B129
Purple



B130
Electric Blue



B131
Gray



WARNING: Cancer and Reproductive Harm
P65Warnings.ca.gov

ENHANCED VISIBILITY

EV SERIES®

ENHANCED VISIBILITY PROFESSIONAL UTILITY VEST

PERFORMANCE FEATURES

- < Heavy duty poly/cotton solid front with mesh back.
- < Oversized zipper front closure reinforced with durable webbing.
- < 2" wide high performance reflective material with 3" high visibility contrasting lime.
- < Reflective piping along pockets & down back sides.
- < Left and right mic tabs.
- < Padded neck for comfort.
- < Two lapel grommets.

POCKETS

- < Left chest 2-tier pocket with dual function flap that can be held open by hook & loop.
- < Large right chest gusseted pocket with flap.
- < Outside lower front gusseted pockets with flaps, left elastic spray can pocket.
- < Inside lower right full length zipper pocket with load-bearing strap.
- < Inside lower left tablet (iPad) pocket with load-bearing strap.
- < Hidden back pouch with left and right zipper access.
- < Inside left chest phone pocket.

SIZES: M-5X

Non-ANSI Compliant



B500 Black/Lime



WARNING: Cancer and Reproductive Harm
P65Warnings.ca.gov

ENHANCED VISIBILITY

EV SERIES®

ENHANCED VISIBILITY CONTRAST T-SHIRT

PERFORMANCE FEATURES

- < Microfiber polyester material wicks away moisture.
- < 2" wide high performance breathable reflective tape significantly reduces hot spots and provides greater flexibility over solid tapes.
- < Flat stitched high visibility contrast panels enhance daytime visibility and significantly improve comfort and coolness over layered contrasting panels.

POCKETS

- < Left chest pocket.

SIZES: M-5X

ANSI 107 Type O | Class 1 Compliant



B200 Black/Lime

B202 Royal Blue/Lime



WARNING: Cancer and Reproductive Harm
P65Warnings.ca.gov



Jacket and Hoodie are sold separately, but designed to be zipped together for added warmth.



B300 Black/Lime



B310 Black/Lime

ENHANCED VISIBILITY

EV SERIES®

ENHANCED VISIBILITY PREMIUM JACKET

PERFORMANCE FEATURES

- < Durable ripstop material coated with Dupont™ Teflon® fabric protector.
- < 2" wide breathable reflective material with 3.5" lime contrast.
- < Reflective piping improves reflectivity all the way around the garment.
- < Waterproof front zipper closure.
- < Waterproof seam sealed construction.
- < Adjustable wrist cuffs.
- < Seasonal item.

POCKETS

- < Hidden left chest pocket with zipper and retractable clear ID holder.
- < Two outside slash pockets with waterproof zipper.
- < Lower left hidden tablet (iPad) pocket with zipper.

SIZES: M-5X

ANSI 107 Type O | Class 1 Compliant

ENHANCED VISIBILITY

EV SERIES®

ENHANCED VISIBILITY HEAVYWEIGHT HOODIE

PERFORMANCE FEATURES

- < High quality heavyweight polyester sweatshirt material.
- < Rib knit cuffing.
- < 2" wide breathable reflective material with 3.5" lime contrast.
- < Zipper front closure.

POCKETS

- < Lower outside slash pockets.

SIZES: M-5X

ANSI 107 Type O | Class 1 Compliant



WARNING: Cancer and Reproductive Harm
P65Warnings.ca.gov



ACCESSORIES

"My safety is my highest priority at every jobsite that I go to. Kishigo quality stands out above the rest to me."

Luis, Superintendent

2810 Lime
HARD HAT
SUN SHIELD



WARNING: Cancer and Reproductive Harm
P65Warnings.ca.gov

PREMIUM

BRILLIANT SERIES

1584 Lime

**ULTIMATE REFLECTIVE
CONTRAST VEST**



WARNING: Cancer and Reproductive Harm
P65Warnings.ca.gov



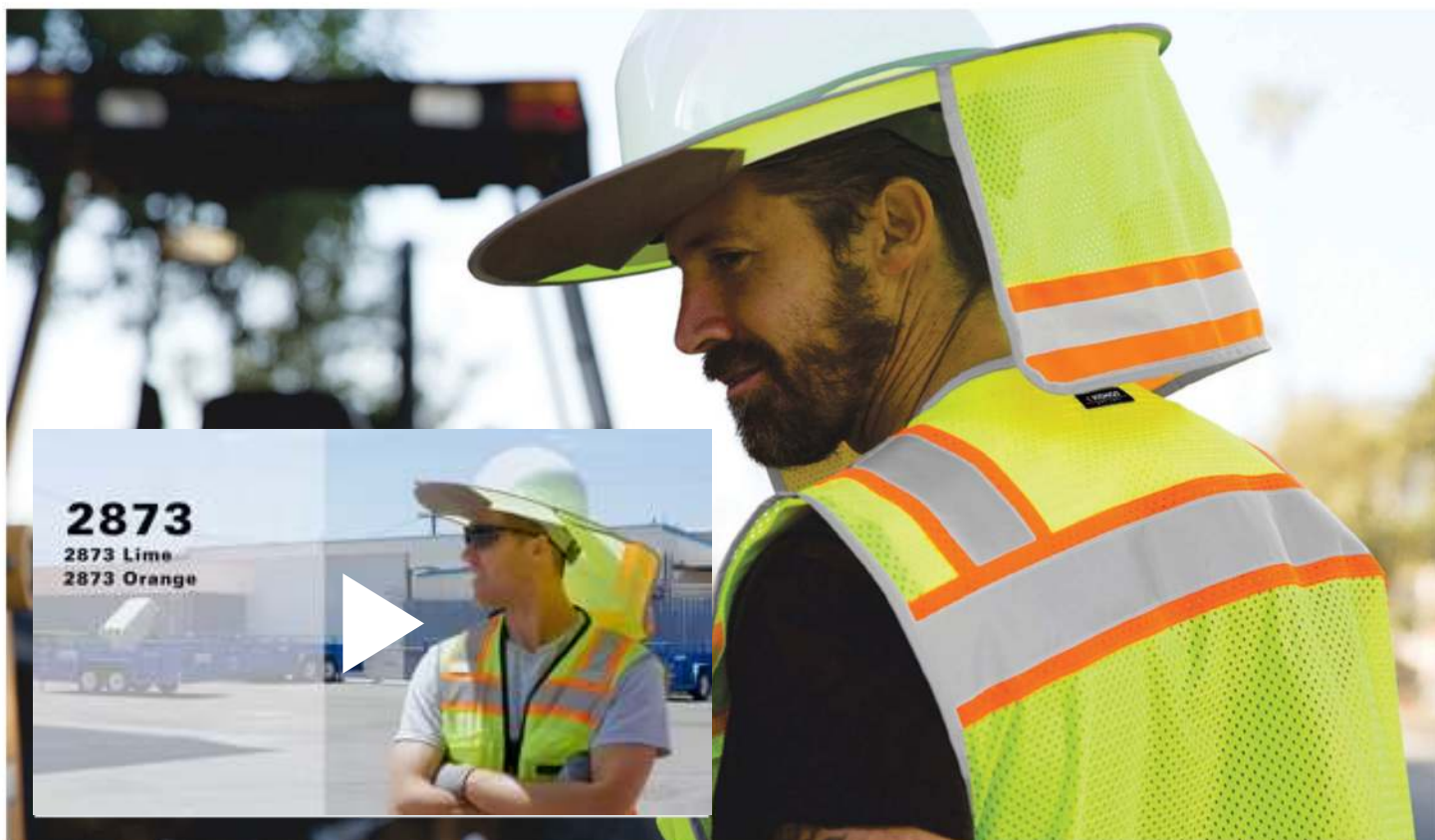
FULL BRIM SUN SHIELD

PERFORMANCE FEATURES

- < 100% polyester shade with breathable mesh nape protector.
- < Designed to fit over full brim hard hats.
- < Easy to fold and put away.
- < Brilliant Trim reflective edging improves low light visibility.
- < 1/2" reflective material with contrasting color.

2873 Lime

2874 Orange



WARNING: Cancer and Reproductive Harm
P65Warnings.ca.gov



2810 Lime
2813 Orange

HARD HAT SUN SHIELD

PERFORMANCE FEATURES

- < Keeps your neck well shaded.
- < Elastic band to fit over most hard hats.
- < Ultra-Cool™ 100% polyester mesh with contrasting trim.
- < 5/8" wide high performance reflective material with contrasting material.



2808 Lime
2809 Orange

HARD HAT NAPE PROTECTOR

PERFORMANCE FEATURES

- < Protects your neck from the sun while wearing your hard hat.
- < 100% polyester solid material.
- < Self-adhesive hook & loop tabs allow you to attach to the inside or outside of any hard hat.
- < 2" wide high performance reflective material.



WARNING: Cancer and Reproductive Harm
P65Warnings.ca.gov



2824 Lime (L-XL)

FULL BRIM SAFARI HAT

PERFORMANCE FEATURES

- < 100% polyester material.
- < Mesh around the crown of the head keeps you cool and ventilated.
- < 1" wide reflective material with 2" contrasting color material 360° around the hat.
- < Dark grey under brim reduces glare.
- < Reflective piping around brim and top of hat.
- < Drawstring keeps the hat securely on your head.

SIZES: L-XL

ANSI 107 Accessory Compliant



2828 Lime

LIME FLEECE HIGH VISIBILITY CAP

PERFORMANCE FEATURES

- < Polyester jersey knit material with fleece backing for added warmth.
- < Reflective material maintains 360° visibility around the cap.
- < Can be worn by itself or under hard hat or hood.

SIZES: One size fits most.



2826 Lime
2827 Orange

KNIT BEANIE

PERFORMANCE FEATURES

- < Soft 100% acrylic knit material.
- < Two stripes of reflective thread are woven into the beanie, allowing for greater flexibility over sewn on reflective tape.



WARNING: Cancer and Reproductive Harm
P65Warnings.ca.gov



2816 Lime Jersey

MULTI-WEAR CLIMATE SHIELD

PERFORMANCE FEATURES

- < Multiple configurations to fit any style or weather condition.
- < Lightweight 100% polyester jersey knit material.

SIZES: One size fits most.



HAT LINER



BALACLAVA



NECK SHIELD



DOO-RAG



FACE GUARD



FOULARD

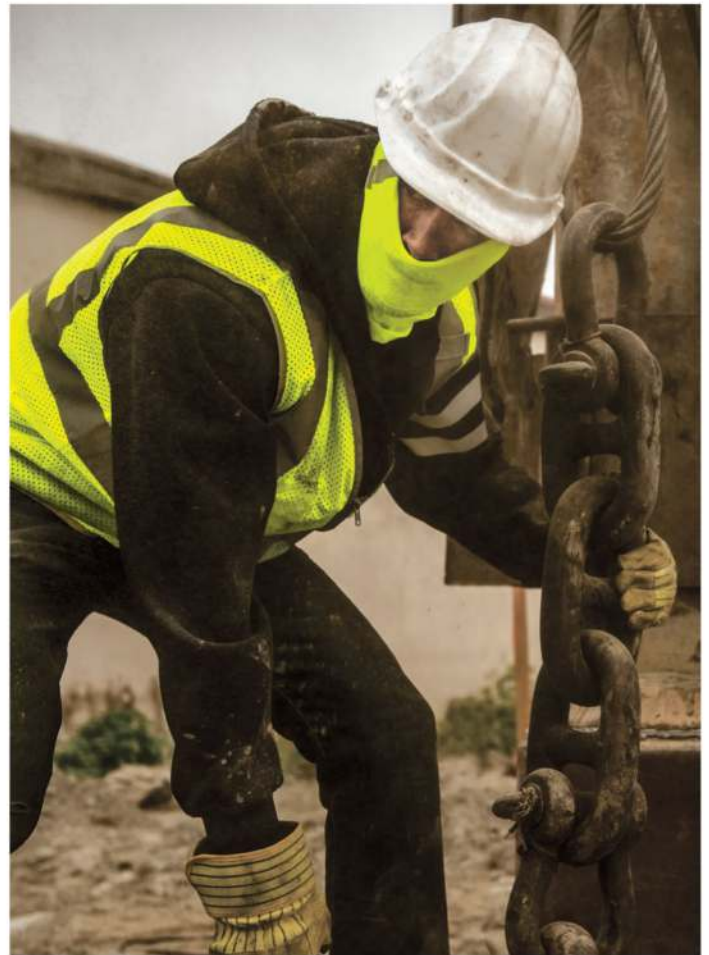


SAHARIENNE



HAIR BAND

OPTIONS TO WEARING SHIELD



2816 Lime-Multi-Wear Climate Shield



WARNING: Cancer and Reproductive Harm
P65Warnings.ca.gov



3881 Lime

ARM/ANKLE BANDS

PERFORMANCE FEATURES

- < 2" wide elastic arm/ankle band for added visibility.
- < Hook & loop adjustability.
- < 5/8" wide reflective material



RTCIDL Lime
RTCIDO Orange

RETRACTABLE CLEAR ID POCKET

PERFORMANCE FEATURES

- < Available in Lime or Orange trim to match the product pocket.
- < Designed to fit inside our radio chest pockets while still allowing the hook & loop flap to close.

DIMENSIONS: Designed for products with a 4" wide radio pocket. (Clear ID holder is 3" x 4")

For more information: 800.338.9480



WARNING: Cancer and Reproductive Harm
P65Warnings.ca.gov



• APPLIED BY KISHIGO •



WARNING: Cancer and Reproductive Harm
P65Warnings.ca.gov

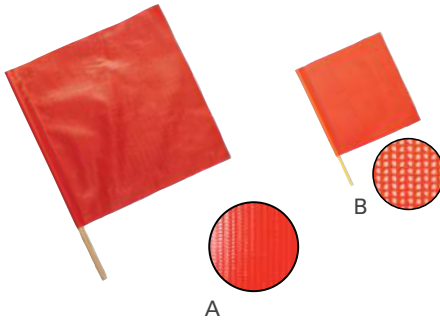


5950 STOP/SLOW

STOP SIGN

NON-REFLECTIVE

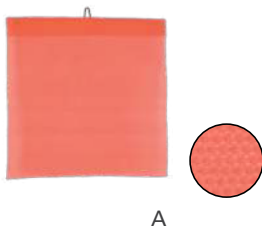
- < 18" Screened hard board.
- < 9" Handle.



WARNING FLAGS

STANDARD WARNING FLAGS

- A. 1600 VINYL
 - < 18" x 18" red/orange reinforced vinyl material.
 - < 3/4" x 24" hardwood dowel.
- B. 1703 MESH
 - < 18" x 18" red/orange vinyl coated mesh.
 - < 3/4" x 24" hardwood dowel.



OVERHANG FLAGS

STANDARD WARNING FLAGS

- A. D-5971 MESH
 - < 18" x 18" fluorescent red/orange 10 oz heavy duty vinyl coated mesh.
 - < 12 gauge wire hanger.



WARNING: Cancer and Reproductive Harm
P65Warnings.ca.gov

T-SHIRTS

“Safety is mandatory on every job site. What you wear matters. It has to last, be flexible and have the right reflective tape. My go to: Kishigo.”

Aaron, Commercial Construction



PREMIUM

BLACK SERIES®

9175 Lime
COOL TOUCH
SHORT SLEEVE
T-SHIRT



WARNING: Cancer and Reproductive Harm
P65Warnings.ca.gov

PREMIUM

BLACK SERIES

9177 Lime

COOL TOUCH LONG
SLEEVE T-SHIRT

WARNING: Cancer and Reproductive Harm
P65Warnings.ca.gov

PREMIUM

BLACK SERIES®

COOL TOUCH T-SHIRT SHORT SLEEVE

PERFORMANCE FEATURES

- < Premium Kishigo Cool Touch fabric with moisture wicking and anti-odor properties.
- < Increased transfer rate of nearly 7%, of Total Heat Loss (Q_t) value compared to the competition.
- < Micro mesh on front, back and in high heat areas to promote exceptional breathability.
- < Sun protection UPF 50+ Premium Cool Touch fabric/15+ Micro mesh.
- < 2" wide 4-way stretch high performance breathable reflective material.
- < Black micro mesh panels placed in high stress areas to conceal perspiration.
- < Tag-less neck label for extra comfort.

POCKETS

- < Left chest welt pocket.

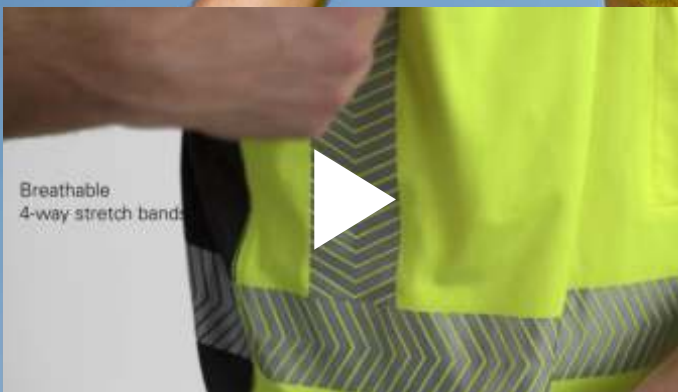
SIZES: M-5X

ANSI 107 Type R | Class 2 Compliant



NEW 9173 Lime

This video can be viewed in fullscreen.



WARNING: Cancer and Reproductive Harm
P65Warnings.ca.gov

PREMIUM

BLACK SERIES®**COOL TOUCH T-SHIRT
SHORT SLEEVE****PERFORMANCE FEATURES**

- < Premium Kishigo Cool Touch fabric with moisture wicking and anti-odor properties.
- < Increased transfer rate of nearly 7%, of Total Heat Loss (Q_t) value compared to the competition.
- < Micro mesh on front, back and in high heat areas to promote exceptional breathability.
- < Sun protection UPF 50+ Premium Cool Touch fabric/15+ Micro mesh.
- < 2" wide 4-way stretch high performance breathable reflective material.
- < Black micro mesh panels placed in high stress areas to conceal perspiration.
- < Tag-less neck label for extra comfort.

POCKETS

- < Left chest welt pocket.

SIZES: M-5X

(Size medium, back lower verticals go all the way down)

ANSI 107 Type R | Class 3 Compliant

**NEW 9175 Lime**

WARNING: Cancer and Reproductive Harm
P65Warnings.ca.gov



PREMIUM
BRILLIANT SERIES®

HIGH PERFORMANCE CLASS 2 T-SHIRT

PERFORMANCE FEATURES

- < UPF rated, extremely lightweight with exceptional breathability.
- < Smooth polyester material on front with micro sport mesh on back.
- < 2" wide high performance breathable reflective tape significantly reduces hot spots and provides greater flexibility.
- < Brilliant Series Trim (reflective thread) down sides and around waist for added low light visibility.
- < Black bottom front to keep t-shirt appearance clean and professional.
- < Tagless neck label for extra comfort.
- < Lower Inside: Microfiber patch for cleaning safety glasses.

POCKETS

- < Left chest pocket.

SIZES: M-5X

ANSI 107 Type R | Class 2 Compliant



9160 Lime



FRONT: Smooth polyester.



BACK: Micro sport mesh.



WARNING: Cancer and Reproductive Harm
P65Warnings.ca.gov



PREMIUM

BLACK SERIES®**HIGH PERFORMANCE
POLO SHIRT****PERFORMANCE FEATURES**

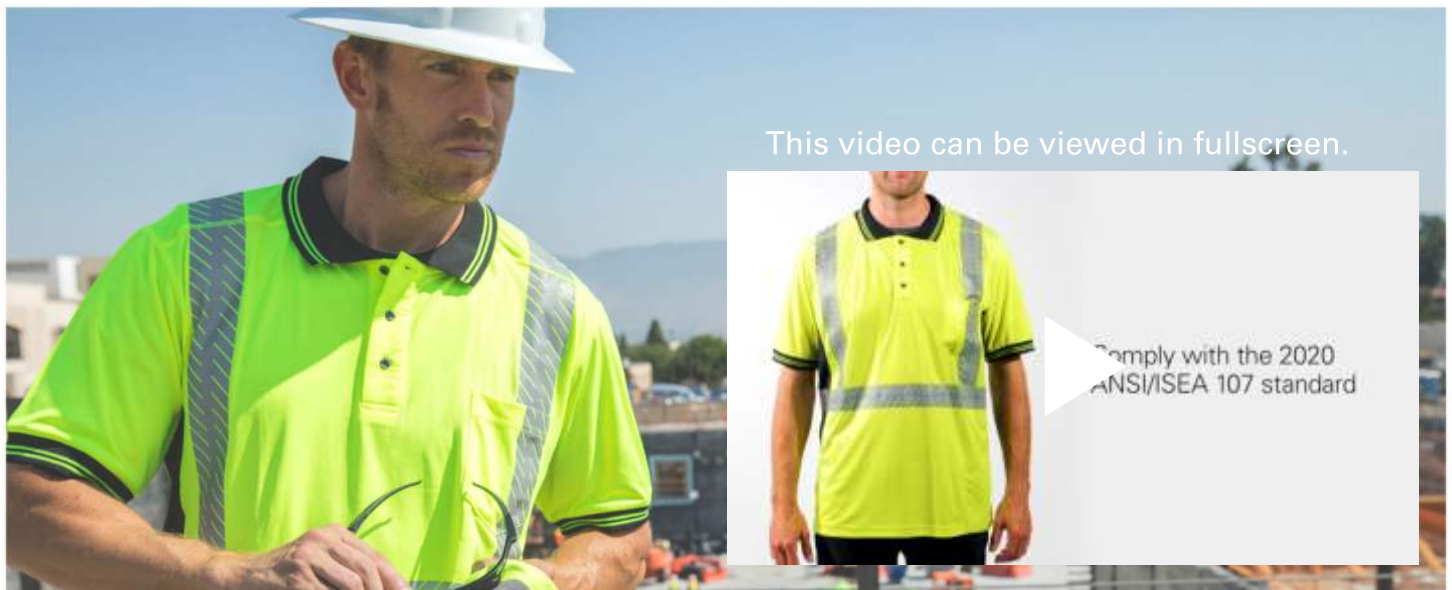
- < UPF rated, extremely lightweight with exceptional breathability.
- < Smooth polyester material on front with micro sport mesh on back.
- < 2" wide high performance breathable reflective material.
- < Black sides provide visual contrast.
- < 3 button closure.
- < Black ribbed knit collar and sleeve cuffing with 2 lime stripes.
- < Lower inside microfiber patch for cleaning safety glasses.

POCKETS

- < Left chest pocket.

SIZES: S-5X

ANSI 107 Type R | Class 2 Compliant

**9220 Lime**

WARNING: Cancer and Reproductive Harm
P65Warnings.ca.gov



NEW 9177 Lime

PREMIUM

BLACK SERIES®

COOL TOUCH T-SHIRT LONG SLEEVE

PERFORMANCE FEATURES

- < Premium Kishigo Cool Touch fabric with moisture wicking and anti-odor properties.
- < Increased transfer rate of nearly 7%, of Total Heat Loss (Q_t) value compared to the competition.
- < Micro mesh on front, back and in high heat areas to promote exceptional breathability.
- < Sun protection UPF 50+ Premium Cool Touch fabric/15+ Micro mesh.
- < 2" wide 4-way stretch high performance breathable reflective material.
- < Lower black sleeves conceal dirt stains and provide a professional appearance on the job site.
- < Tag-less neck label for extra comfort.

POCKETS

- < Left chest welt pocket.

SIZES: M-5X

ANSI 107 Type R | Class 3 Compliant



WARNING: Cancer and Reproductive Harm
P65Warnings.ca.gov



NEW 9179 Lime

PREMIUM
BRILLIANT SERIES®

CONTRAST T-SHIRT SHORT SLEEVE

PERFORMANCE FEATURES

- < Sun protection UPF 50+ smooth polyester/15+ Micro mesh.
- < Smooth polyester front with a micro mesh back to promote breathability.
- < 2" wide high performance breathable reflective material on top of 4" contrast panels.
- < Flatlock stitched contrast panels improve daytime visibility and significantly improves comfort and coolness over layered contrasting panels.
- < Black bottom front allows for a clean and professional appearance.

POCKETS

- < Left chest patch pocket.

SIZES: M-5X

ANSI 107 Type R | Class 3 Compliant



NEW 9181 Lime

PREMIUM
BRILLIANT SERIES®

CONTRAST T-SHIRT LONG SLEEVE

PERFORMANCE FEATURES

- < Sun protection UPF 50+ smooth polyester/15+ Micro mesh.
- < Smooth polyester front with a micro mesh back to promote breathability.
- < 2" wide high performance breathable reflective material on top of 4" contrast panels.
- < Flatlock stitched contrast panels improve daytime visibility and significantly improves comfort and coolness over layered contrasting panels.
- < Black bottom front and cuffs allows for a clean and professional appearance.

POCKETS

- < Left chest patch pocket.

SIZES: M-5X

ANSI 107 Type R | Class 3 Compliant



WARNING: Cancer and Reproductive Harm
P65Warnings.ca.gov



9114 Lime
9115 Orange

PREMIUM
BLACK SERIES®

LONG SLEEVE CLASS 3 T-SHIRT

PERFORMANCE FEATURES

- < Microfiber polyester material wicks away moisture.
- < 2" wide high performance reflective material.

POCKETS

- < Left chest pocket.

SIZES: M-5X

ANSI 107 Type R | Class 3 Compliant



9120 Lime

FLAT STITCH PANELS CLASS 2 T-SHIRT

PERFORMANCE FEATURES

- < Microfiber polyester material wicks away moisture.
- < 2" wide high performance reflective material on contrast panels.
- < Flat stitched contrast panels improve daytime visibility and significantly improves comfort and coolness over layered contrasting panels.

POCKETS

- < Left chest pocket.

SIZES: M-5X

ANSI 107 Type R | Class 2 Compliant



WARNING: Cancer and Reproductive Harm
P65Warnings.ca.gov



9162 Lime

BLACK BOTTOM CLASS 2 T-SHIRT

PERFORMANCE FEATURES

- < Microfiber polyester material wicks away moisture.
- < 2" wide high performance reflective material.
- < Black bottom front to keep t-shirt appearance clean and professional.
- < Lower inside microfiber patch for cleaning safety glasses.

POCKETS

- < Left chest pocket.

SIZES: M-5X

ANSI 107 Type R | Class 2 Compliant



9110 Lime
9111 Orange

SHORT SLEEVE CLASS 2 T-SHIRT

PERFORMANCE FEATURES

- < Microfiber polyester material wicks away moisture.
- < 2" wide high performance reflective material.

POCKETS

- < Left chest pocket.

SIZES: S-5X

ANSI 107 Type R | Class 2 Compliant



9118 Lime
9119 Orange

SHORT SLEEVE CLASS 3 T-SHIRT

PERFORMANCE FEATURES

- < Microfiber polyester material wicks away moisture.
- < 2" wide high performance reflective material.

POCKETS

- < Left chest pocket.

SIZES: M-5X

ANSI 107 Type R | Class 3 Compliant



WARNING: Cancer and Reproductive Harm
P65Warnings.ca.gov



P R E M I U M

BLACK SERIES®

LONG SLEEVE T-SHIRT

PERFORMANCE FEATURES

- < Microfiber polyester material wicks away moisture.
- < 2" wide high performance breathable reflective tape significantly reduces hot spots and provides greater flexibility over solid tapes.
- < Black sides provide visual contrast.

POCKETS

- < Left chest pocket.

SIZES: M-5X

ANSI 107 Type R | Class 3 Compliant



WARNING: Cancer and Reproductive Harm
P65Warnings.ca.gov



9134 Lime

9135 Orange



WARNING: Cancer and Reproductive Harm
P65Warnings.ca.gov



LONG SLEEVE CLASS 3 T-SHIRT

PERFORMANCE FEATURES

- < Microfiber polyester material wicks away moisture.
- < 2" wide high performance reflective material.

POCKETS

- < Left chest pocket.

SIZES: M-5X

ANSI 107 Type R | Class 3 Compliant



9145 Lime

9146 Orange



9122 Lime



9124 Lime

LONG/SHORT SLEEVE T-SHIRT

PERFORMANCE FEATURES

- < Microfiber polyester material wicks away moisture.
- < Perfect for protecting your arms from the sun while staying cool.

POCKETS

- < Left chest pocket.

SIZES: M-5X

Non-ANSI Compliant



WARNING: Cancer and Reproductive Harm
P65Warnings.ca.gov



FR LONG SLEEVE T-SHIRT

PERFORMANCE FEATURES

- < Lightweight modacrylic blend Flame Resistant interlock knit material.
- < 2" wide high performance breathable reflective material greatly reduces hot spots and provides greater flexibility over solid tapes.
- < Dark Flame Resistant sides provide visual contrast.

POCKETS

- < Left chest pocket.

SIZES: M-5X | MT-5XT

NFPA 70E-2012 | ASTM F1506 | CAT 2
Arc Rating/ATPV: 16 cal/cm²

ANSI 107 Type R | Class 3 Compliant



F506 Lime

F506T Lime

AVAILABLE
IN TALL SIZES



WARNING: Cancer and Reproductive Harm
P65Warnings.ca.gov



FR LONG SLEEVE HENLEY T-SHIRT

PERFORMANCE FEATURES

- < Lightweight modacrylic blend Flame Resistant interlock knit material.
- < 2" wide high performance breathable reflective material greatly reduces hot spots and provides greater flexibility over solid tapes.
- < 3 button closure.

POCKETS

- < Left chest pocket.

SIZES: M-5X | MT-5XT

NFPA 70E-2012 | ASTM F1506 | CAT 2
Arc Rating/ATPV: 16 cal/cm²

ANSI 107 Type R | Class 3 Compliant



F694 Lime
F694T Lime

AVAILABLE
IN TALL SIZES



WARNING: Cancer and Reproductive Harm
P65Warnings.ca.gov

CLASS E PANTS AND GAITERS

"With Kishigo Product I know It's giving me the proper visibility that I need on site."

John, Construction Worker



PREMIUM

BLACK SERIES™

3932 Lime

MESH GAITERS



WARNING: Cancer and Reproductive Harm
P65Warnings.ca.gov



PREMIUM
BLACK SERIES®

1515 Lime
BLACK BOTTOM VEST

PREMIUM
BLACK SERIES®

1513 Lime
HEAVY DUTY VEST

PREMIUM
BRILLIANT SERIES®

3118 Lime
MESH PANTS

PREMIUM
BRILLIANT SERIES®

3118 Lime
MESH PANTS





PREMIUM
BRILLIANT SERIES®

ULTIMATE REFLECTIVE MESH PANTS

PERFORMANCE FEATURES

- < 100% polyester mesh.
- < Brilliant Series reflective piping considerably improves low light visibility.
- < Snap front closure, hook & loop fly with adjustable sides and elastic back.
- < Two 1" wide high performance reflective material with 4.5" contrasting color.
- < Patented Brilliant Plus Reflective™ material greatly enhances worker visibility during low light and nighttime hours.
- < Brilliant Trim reflective piping improves low light visibility and provides instant differentiation between you and the work zone.
- < Elastic bottom cuff with zipper for boot access.
- < Black bottom to help keep a clean appearance.

POCKETS

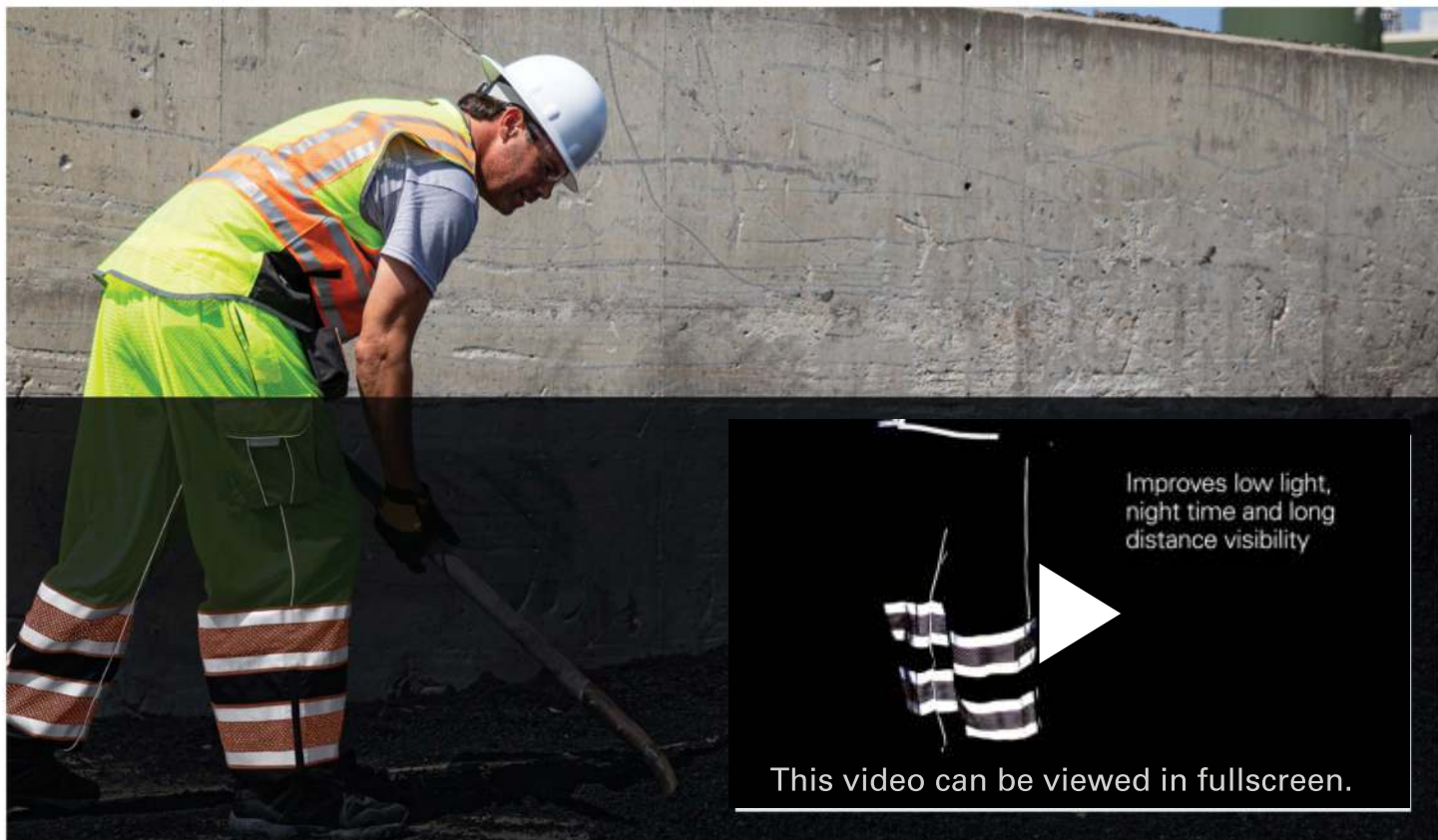
- < Heavy duty solid right cargo pocket with reflective piping.
- < Left and right side pocket access slits.

SIZES:

- < S-M Waist - Up to 48" | Inseam - 29"
- < L-XL Waist - Up to 54" | Inseam - 32"
- < 2X-4X Waist - Up to 60" | Inseam - 34"

ANSI 107 Class E Compliant

3173 Lime



WARNING: Cancer and Reproductive Harm
P65Warnings.ca.gov



PREMIUM
BRILLIANT SERIES®

MESH PANTS

PERFORMANCE FEATURES

- < Ultra-Cool™ 100% polyester mesh.
- < Brilliant Series reflective piping considerably improves low light visibility.
- < Snap front closure, hook & loop fly with adjustable sides and elastic back.
- < 2" wide high performance reflective material with 3" contrasting color.
- < Elastic bottom cuff with zipper for boot access.
- < Black bottom to help keep a clean appearance.

POCKETS

- < Heavy duty solid right cargo pocket with reflective piping.
- < Left and right side pocket access slits.

SIZES:

- < S-M Waist - Up to 48" | Inseam - 29"
- < L-XL Waist - Up to 54" | Inseam - 32"
- < 2X-4X Waist - Up to 60" | Inseam - 34"

ANSI 107 Class E Compliant

3118 Lime
3119 Orange



WARNING: Cancer and Reproductive Harm
P65Warnings.ca.gov



3117



3108

MESH PANTS

PERFORMANCE FEATURES

- < Ultra-Cool™ 100% polyester mesh.
- < Drawstring waist with elastic back.
- < Elastic bottom cuffs.
- < 3117 has zipper cuff for boot access.
- < 2" wide reflective material.

POCKETS

- < Left and right side pocket access slits.

SIZES:

- < S-M Waist - Up to 48" | Inseam - 29"
- < L-XL Waist - Up to 54" | Inseam - 32"
- < 2X-4X Waist - Up to 60" | Inseam - 34"

ANSI 107 Class E Compliant



WARNING: Cancer and Reproductive Harm
P65Warnings.ca.gov

HOW TO MAKE YOUR CLASS 3 ENSEMBLE.



CLASS 2



CLASS E



CLASS 3



3930 Lime

MESH GAITERS

PERFORMANCE FEATURES

- < Ultra-Cool™ 100% polyester mesh.
- < Two 2" wide high performance reflective material encircle the gaiter.
- < Adjustable hook & loop closure.

ANSI 107 Class E Compliant



3932 Lime

PREMIUM

BLACK SERIES®

MESH GAITERS

PERFORMANCE FEATURES

- < 2" wide high performance reflective material with contrasting mesh.
- < Zipper closure with hook & loop adjustable bottom for easy boot access.
- < Black bottom to help keep a clean appearance.

ANSI 107 Class E Compliant



WARNING: Cancer and Reproductive Harm
P65Warnings.ca.gov

OUTERWEAR

"My family relies on me. I know that I need to be safe on the job so I can stay on the job.
Being visible, being seen, is so important."

Jeff, Roadwork | Construction

JS102 Lime
HOODIE SWEATSHIRT
WITH ZIPPER



WARNING: Cancer and Reproductive Harm
P65Warnings.ca.gov

PREMIUM

BRILLIANT SERIES®

JS152 Lime
360 PRO PARKA

WARNING: Cancer and Reproductive Harm
P65Warnings.ca.gov



JS152 Lime

PREMIUM
BRILLIANT SERIES

360 PRO PARKA

PERFORMANCE FEATURES

- < 2" wide ORALITE prismatic tape performs exceptionally well under wet conditions and provides additional durability compared to silver glass beaded reflective material.
- < Reflective piping accents add better visibility in low light.
- < Durable ripstop material with waterproof seam sealed construction.
- < Tall collar designed with asymmetrical zipper to avoid chafing.
- < 6" side zipper for added comfort when sitting and provides improved airflow.
- < Thermal insulation.
- < Adjustable cuffs.
- < Black lower body help the wearer keep a clean appearance.
- < Storm cuff (powder barrier) waist liner keeps wind and snow out of critical areas.
- < Seasonal item.

POCKETS

- < Two outside lower inset pockets with zippers.
- < Hidden left chest pocket.
- < Left forearm zipper pocket with microfiber wipe for cleaning safety glasses.
- < Inside lower left hidden tablet (iPad) pocket with zipper.

SIZES: M-5X

ANSI 107 Type R | Class 3 Compliant

ORALITE®



WARNING: Cancer and Reproductive Harm
P65Warnings.ca.gov

PREMIUM

BLACK SERIES™**2 IN 1 JACKET****PERFORMANCE FEATURES**

- < Durable ripstop material with waterproof seam sealed construction.
- < 2" wide high performance reflective material laminated directly to the fabric for longer life.
- < Zipper front closure with storm flap.
- < Removable zip up hoodie sweatshirt.
- < Black areas provide contrast, style, and durability.
- < Detachable rain hood can be stored in pocket.
- < Cuffs with durable rubber pull tabs make for easy adjustments while wearing gloves.
- < Ventilated cape back for additional comfort.
- < Reflective piping accents on back, sides, and pockets.
- < Seasonal item.

POCKETS

- < Two outside lower gusseted pockets with hook & loop flaps.
- < Two outside lower side access pockets with microfleece liner.
- < Left chest pocket with retractable clear ID holder.
- < Left arm cell phone pocket with waterproof zipper.
- < Inside lower left hidden tablet (iPad) pocket with zipper. Tablet pocket can be accessed without unzipping the jacket.
- < Traditional hoodie design with two side slash pockets.

SIZES: M-5X

ANSI 107 Type R | Class 3 Compliant

**JS135 Lime**

Left arm cell phone pocket with waterproof zipper.

Two side access hand warmer pockets with microfleece lining.

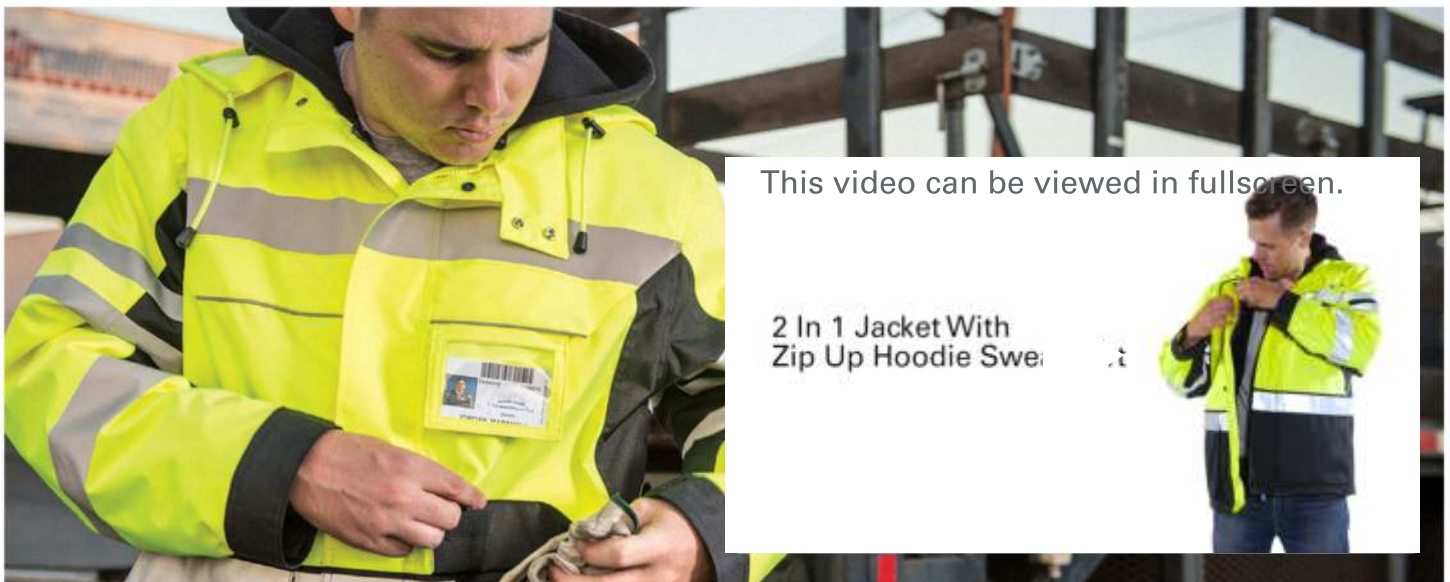
Two large integrated outside lower gusseted patch pockets.



Tape design allows for larger logo area on back.



Removable high quality zip up hoodie sweatshirt with design inspired reflective bands on the left arm.



This video can be viewed in fullscreen.

2 In 1 Jacket With Zip Up Hoodie Swe:



WARNING: Cancer and Reproductive Harm
P65Warnings.ca.gov



JS140 Lime
JS141 Orange

PREMIUM
BLACK SERIES®

HEAVY DUTY PARKA

PERFORMANCE FEATURES

- < Durable ripstop material with waterproof seam sealed construction.
- < Quilted liner with thermal insulation.
- < 2" wide high performance reflective material.
- < Zipper front closure with storm flap.
- < Storm Cuff (Powder Barrier) waist and sleeve liners keep wind and snow out of critical areas.
- < Black areas provide contrast, style, and durability.
- < Detachable lined hood can be stored in pocket.
- < Cuffs with durable rubber pull tabs make for easy adjustments while wearing gloves.
- < Reflective piping accents on back, sides, and pockets.
- < Seasonal item.

POCKETS

- < Two outside lower gusseted pockets with hook & loop flaps.
- < Two outside lower side access pockets with microfleece lining.
- < Left chest pocket with retractable clear ID holder.
- < Left arm pencil pocket.
- < Inside lower left hidden tablet (iPad) pocket with zipper.
- < Tablet pocket can be accessed without unzipping the jacket.

SIZES: M-5X

ANSI 107 Type R | Class 3 Compliant



IN410 Lime

IN412 Lime

PREMIUM
BLACK SERIES®

INSULATED PANT INSULATED BIB

PERFORMANCE FEATURES

- < Durable ripstop material with waterproof seam sealed construction.
- < Quilted thermal insulation.
- < 2" wide high performance reflective material.
- < Reflective piping down sides add better visibility in low light conditions.
- < Zipper cuff for boot access with black bottom to help keep a clean appearance.
- < Seasonal item.

POCKETS

- < Two front zipper pockets.
- < Front lower cargo flap pocket with zipper closure.
- < Back pocket with zipper closure.

INSULATED PANT

- < Removable, adjustable elastic suspenders.
- < Outer thigh mesh lined ventilation with zipper closure.
- < Elastic adjustable tabs inside waist to customize fit.

INSULATED BIB

- < Y-back adjustable elastic suspenders for a personalized fit.
- < Partial elastic waist.
- < Two way zipper front closure.
- < Left chest pocket with zipper closure.

SIZES: S-4X

ANSI 107 Class E Compliant



WARNING: Cancer and Reproductive Harm
P65Warnings.ca.gov



WARNING: Cancer and Reproductive Harm
P65Warnings.ca.gov



RIPSTOP BOMBER JACKET

PERFORMANCE FEATURES

- < Durable ripstop material with waterproof seam sealed construction and fleece body & hood.
- < Hood fits into the collar or can be removed altogether.
- < Quilted sleeves for easy arm in and out access.
- < 2" wide high performance reflective material.
- < Adjustable cuffs with rubber pulls for easy use when wearing gloves.
- < Left and right mic tabs.

POCKETS

- < Right chest vertical pocket for wallet or other accessories.
- < Left chest radio pocket.
- < Left and right outside slash pockets.
- < Left bicep 2-division pencil/pen pocket with drainage grommets.
- < Large vertical tablet (iPad) pocket with zipper inside storm flap. Tablet can also be accessed without unzipping the jacket.

SIZES: S-5X

(Size small only available in Lime)

ANSI 107 Type R | Class 3 Compliant



JS130 Lime

JS131 Orange



WARNING: Cancer and Reproductive Harm
P65Warnings.ca.gov



PREMIUM
BRILLIANT SERIES®

BOMBER JACKET

PERFORMANCE FEATURES

- < Durable ripstop material with waterproof seam sealed construction.
- < Removable black quilted liner.
- < Hidden collar hood.
- < 2" wide 3M™ Scotchlite™ reflective material with 3" contrast.
- < Brilliant Series reflective piping on shoulders, hood and sleeve seams.
- < Adjustable cuffs.
- < Black bottom front & sleeves to keep a clean appearance.
- < Seasonal item.

POCKETS

- < Left chest pocket with retractable clear ID holder.
- < Left bicep 2-division pencil/pen pocket.
- < Two outside lower slash pockets with zippers.
- < Inside wallet pocket.

SIZES: M-5X

ANSI 107 Type R | Class 3 Compliant



JS119 Lime
JS120 Orange



Removable Liner

3M Scotchlite™
Reflective Material

3M and Scotchlite are trademarks of 3M, used under license in Canada.



This video can be viewed in fullscreen.

Brilliant Series
reflective piping on
collar, shoulders, hood
and sleeve seams



WARNING: Cancer and Reproductive Harm
P65Warnings.ca.gov



NEW JS156 Lime

CONTRAST BOMBER JACKET

PERFORMANCE FEATURES

- < Durable waterproof seam sealed shell with thermal insulation.
- < 2" wide reflective material with 3" contrasting panels for added daytime visibility.
- < Detachable hood.
- < Black bottom front & sleeves to keep a clean appearance.

POCKETS

- < Lower slash pockets angled for ergonomic comfort.
- < Left chest radio pocket with flap and D-ring.

SIZES: M-5X

ANSI 107 Type R | Class 3 Compliant



**JS121 Lime
JS122 Orange**

ECONOMY BOMBER JACKET

PERFORMANCE FEATURES

- < Durable waterproof seam sealed shell with thermal insulation.
- < 2" wide reflective material.
- < Hidden collar hood.
- < Black bottom front & sleeves to keep a clean appearance.
- < Seasonal item.

POCKETS

- < Larger radio pocket on left chest.
- < Two outside slash pockets.
- < Right chest outside access multi-use pocket with vertical zipper closure.

SIZES: M-5X

ANSI 107 Type R | Class 3 Compliant



WARNING: Cancer and Reproductive Harm
P65Warnings.ca.gov

**JS137 Lime**

PREMIUM

BLACK SERIES™**SOFT SHELL JACKET****PERFORMANCE FEATURES**

- < Crafted with durable water-resistant soft shell material.
- < 2" wide high performance reflective material.
- < Cuffs feature durable rubber pull tabs for easy adjustments.
- < Reflective piping accents add better visibility in low light.
- < Convenient underarm vents for breathability.
- < Waist cinches are hidden in front pockets.
- < Black areas offer contrast, style and durability.
- < JS138: Seasonal item.

POCKETS

- < Two outside lower slash pockets with zipper.
- < Left chest media-compatible pocket.
- < Left arm cell phone pocket.

SIZES: S-5X

ANSI 107 Type R | Class 3 Compliant

**JS144 Lime**

PREMIUM

BLACK SERIES™**WOMEN'S SOFT SHELL JACKET****PERFORMANCE FEATURES**

- < Crafted with durable water-resistant soft shell material.
- < 2" wide high performance reflective material.
- < Reflective piping accents add better visibility in low light conditions.
- < Elastic black cuffs with inset thumbholes.
- < Convenient underarm vents for breathability.
- < Black areas offer contrast, style and durability.

POCKETS

- < Two outside lower slash pockets with zippers.
- < Inside lower left media-compatible pocket with hook & loop closure and pull tab.
- < Left arm cell phone pocket.

SIZES: S-XL

ANSI 107 Type R | Class 2 Compliant (Size S)

ANSI 107 Type R | Class 3 Compliant (Size M-XL)



WARNING: Cancer and Reproductive Harm
P65Warnings.ca.gov



JS150 Lime



JS135 Lime
Can be zipped into
the JS135 & B300.

PREMIUM

BLACK SERIES®

HOODIE SWEATSHIRT WITH ZIPPER

PERFORMANCE FEATURES

- < High quality polyester sweatshirt material with black and lime rib knit cuffs.
- < Stay in sight with 2" wide high performance breathable reflective material.
- < Black accents add contrast, style and durability.
- < Reflective piping accents add better visibility in low light conditions.
- < Hood is lined with soft jersey mesh for optimum comfort.
- < Designed to zip into B300 & JS135 jackets for added warmth (sold separately).

POCKETS

- < Lower outside slash pockets.

SIZES: M-5X

ANSI 107 Type R | Class 3 Compliant

PREMIUM

BLACK SERIES®

HEAVYWEIGHT HOODIE

PERFORMANCE FEATURES

- < Made from high quality heavyweight polyester sweatshirt material with black rib knit cuffing.
- < Stay in sight with 2" wide breathable reflective material.
- < Black accents on lower body and sleeves help hide dirt.
- < Concealed reflective piping on front, back, sides, pockets and hood for better low light visibility.
- < Hood is lined with soft jersey mesh for optimum comfort.

POCKETS

- < Large kangaroo-style pocket keeps hands warm.

SIZES: M-5X

ANSI 107 Type R | Class 3 Compliant



JS142 Lime



Premium Black Series
featuring extra
reflective piping.



WARNING: Cancer and Reproductive Harm
P65Warnings.ca.gov



JS102 Lime
JS103 Orange



JS154 Lime



HOODIE SWEATSHIRT WITH ZIPPER

PERFORMANCE FEATURES

- < Black lower body and sleeves help the wearer keep a clean appearance.
- < High quality polyester sweatshirt material.
- < Black rib knit cuffing.
- < 2" wide high performance reflective material.

POCKETS

- < Lower outside slash pockets.

SIZES: M-5X

ANSI 107 Type R | Class 3 Compliant

PREMIUM

BLACK SERIES®

PULLOVER HOODIE SWEATSHIRT

PERFORMANCE FEATURES

- < High quality polyester sweatshirt material to keep you comfortable on the jobsite.
- < Black lower body and sleeves help the wearer keep a clean appearance.
- < Black rib knit cuffing.
- < 2" wide high performance reflective material.

POCKETS

- < Large kangaroo-style pocket keeps hands warm.

SIZES: S-5X

ANSI 107 Type R | Class 3 Compliant



F507 Lime

FR SWEATSHIRT HOODIE

PERFORMANCE FEATURES

- < 10.5 oz Modacrylic blend Flame Resistant sweatshirt material with extremely soft fleece-like inner texture.
- < Black bottom enhances worker's appearance.
- < 2" wide breathable reflective material provides flexibility and comfort.
- < Nomex® high temp FR zipper front closure.

POCKETS

- < Two outside lower slash pockets.

SIZES: M-5X

NFPA 70E-2012 | ASTM F1506 | CAT 3
ARC Rating/ATPV: 28 cal/cm²

ANSI 107 Type R | Class 3 Compliant



WARNING: Cancer and Reproductive Harm
P65Warnings.ca.gov



WB102 Lime

PREMIUM
BLACK SERIES®

**PREMIUM BLACK SERIES
WINDBREAKER**

PERFORMANCE FEATURES

- < Designed with lightweight water resistant Ripstop material.
- < Black accents offer a mix of functionality and style.
- < 4 Layer filtration system provides basic protection against non-toxic dust, smoke and other non-toxic particles found on the job site.
- < Adjustable Hood to allow the perfect fit.
- < 2" wide high performance reflective tape.
- < Ventilated back for added comfort.
- < Concealed reflective piping along hood, front and back chest seams for better low light visibility.
- < Black cuffs with thumb hole at sleeve hem.
- < Tall collar design with asymmetrical zipper to avoid chaffing.

POCKETS

- < Two outside lower slash pockets with zippers.
- < Left chest vertical pocket with zipper.

SIZES: S-5X

ANSI 107 Class 3 Compliant



This video can be viewed
in fullscreen.



WARNING: Cancer and Reproductive Harm
P65Warnings.ca.gov



NEW IN400 Lime

INSULATED VEST

PERFORMANCE FEATURES

- < Durable ripstop material.
- < Quilted liner with thermal insulation.
- < 2" wide high-performance reflective material.
- < Black bottom to provide a clean and professional appearance on the job site.
- < Designed to zip into JS135 jacket for added warmth (sold separately).

POCKETS

- < Left chest pocket w/ retractable clear ID and flap.
- < Right chest pocket with flap.
- < Lower front 2-way pockets with flaps and side openings.
- < Lower left tablet pocket with zipper.
- < Inner right and left chest pockets with zipper closures.

SIZES: M-3X

ANSI 107 Type R | Class 2 Compliant



WARNING: Cancer and Reproductive Harm
P65Warnings.ca.gov

RAINWEAR

"I come from a family who works in all aspects of construction, and roadwork from flaggers to iron workers. We all work no matter the elements. Being seen, safe and protected is so important. Kishigo is our one stop shop."

Tara, Roadwork | Construction Photographer

RWJ100 Lime
STORM STOPPER PRO
RAINWEAR JACKET

RWP100 Lime
STORM STOPPER PRO
RAINWEAR PANT



WARNING: Cancer and Reproductive Harm
P65Warnings.ca.gov

PREMIUM

BLACK SERIES®

RWJ106 Lime
RAINWEAR JACKET

PREMIUM

BLACK SERIES®

RWP106 Lime
RAINWEAR PANTS





RWP106 Lime
RWP107 Orange



RWB106 Lime



Detachable hood.



RWJ106 Lime
RWJ107 Orange

PREMIUM

BLACK SERIES®

RAINWEAR JACKET

PERFORMANCE FEATURES

- < Waterproof breathable material with durable seam sealed construction.
- < Black bottom and accents for a mix of functionality and style.
- < Reflective trim improves reflectivity all the way around the garment.
- < 2" wide ORALITE® reflective material performs exceptionally well under wet conditions.
- < Waterproof front zipper.
- < Adjustable wrist cuffs.
- < Ventilated back and armpits.
- < Reinforced D-ring access on back.
- < Detachable hood can be stored in collar.

POCKETS

- < Vertical left chest pocket with waterproof zipper.
- < Lower front slash pockets with waterproof zippers.
- < Left arm cell phone pocket with storm flap and zipper closure.

SIZES: S-M, L-XL, 2X-3X, 4X-5X

ANSI 107 Type R | Class 3 Compliant

RAINWEAR PANTS

PERFORMANCE FEATURES

- < Reflective trim down the outside of the legs for enhanced low light visibility.
- < Adjustable leg cuffs.
- < Zipper cuff for boot access.

POCKETS

- < Large left and right side gusseted cargo pockets with reflective trim.

SIZES: S-M, L-XL, 2X-3X, 4X-5X

ANSI 107 Class E Compliant

RAINWEAR BIB

PERFORMANCE FEATURES

Same as pants, plus:

- < High quality elastic suspenders with quick release buckle.
- < Large chest patch pocket with zipper/storm flap.
- < Large right side cargo pocket with reflective trim, grommets at the bottom of pocket for water drainage.

SIZES: S-M, L-XL, 2X-3X, 4X-5X

ANSI 107 Class E Compliant



WARNING: Cancer and Reproductive Harm
P65Warnings.ca.gov

ORALITE®



This video can be viewed in fullscreen.



Waterproof breathable material with durable seam sealed construction



WARNING: Cancer and Reproductive Harm
P65Warnings.ca.gov

Waterproof breathable material and mesh liner for consistent comfort in wet or humid work conditions.

Brilliant Series reflective piping throughout for additional visibility in low light and severe weather.

Removable hood.

RWJ112 Lime

Adjustable cuffs.

Integrated cell phone and ID pocket. Clear ID holder folds away when not in use.

Prismatic material provides exceptional performance in wet conditions.

Front slash pockets with waterproof zippers.

Right and left side pockets for quick tool access.

Elastic waistband.

Adjustable cuffs fit over work boots.

RWP112 Lime

PREMIUM
BRILLIANT SERIES®

RAINWEAR

PERFORMANCE FEATURES

- < Waterproof material with durable seam sealed construction.
- < Black bottom and accents for a mix of functionality and style.
- < Brilliant Series reflective piping improves reflectivity all the way around the garment.
- < 2" wide ORALITE® prismatic reflective material performs exceptionally well under wet conditions.
- < Waterproof front zipper.
- < Adjustable wrist cuffs.
- < Ventilated back and armpits.
- < Detachable rain hood.

POCKETS

- < Hidden left chest pocket with zipper and retractable clear ID holder.
- < Two outside lower slash pockets with waterproof zipper.
- < Inside lower left hidden tablet (iPad) pocket with zipper.

PANTS

- < Waterproof material with seam sealed construction.
- < Elastic waist with drawstring.
- < Black material on knees to keep a clean appearance.
- < 2" wide ORALITE® reflective material performs exceptionally well under wet conditions.
- < Adjustable bottom cuff with zipper for easy boot access.
- < Pockets: Left and right side pockets with zipper closure.

SIZES: S-M, L-XL, 2X-3X, 4X-5X

ANSI 107 Type R | Class 3 Compliant - Jacket
ANSI 107 Class E Compliant - Pant

This video can be viewed in fullscreen.

2" wide Oralite® reflective material



WARNING: Cancer and Reproductive Harm
P65Warnings.ca.gov

ORALITE®



RWJ100 Lime
RWJ101 Orange



RWP100 Lime
RWP101 Orange

STORM STOPPER PRO RAINWEAR

PERFORMANCE FEATURES

- < 2" wide ORALITE® prismatic reflective tape performs exceptionally well under wet conditions, and provides additional durability over silver glass beaded reflective material.
- < Waterproof material with seam sealed construction keeps the wearer warm and dry.
- < Zipper/storm flap closure for weather protection.
- < Black lower body and sleeves help keep the wearer's appearance neat and clean.
- < Vented cape back for additional breathability.
- < Hidden collar hood.
- < Adjustable wrist cuffs.
- < Mesh liner.
- < D-ring access on back.

POCKETS

- < Two outside pockets with storm flaps and snaps.
- < Left chest radio pocket.

PANTS

- < Adjustable leg cuff snaps.

SIZES: S-M, L-XL, 2X-3X, 4X-5X

ANSI 107 Type R | Class 3 Compliant - Jacket
ANSI 107 Class E Compliant - Pant



RWJ108 Lime



PREMIUM

BRILLIANT SERIES®

LONG RAIN COAT

PERFORMANCE FEATURES

- < Waterproof material with durable seam sealed construction.
- < 2" wide high performance reflective material.
- < Brilliant Series reflective piping on shoulders, hood and sleeve seams.
- < Zipper/storm flap closure for weather protection.
- < Non-sparking snaps and zipper.
- < Adjustable wrist cuffs.
- < Black lower body and sleeves help keep the wearer's appearance neat and clean.
- < Hidden collar hood.

POCKETS

- < Lower front patch pockets with flaps.

SIZES: S-M, L-XL, 2X-3X, 4X-5X

ANSI 107 Type R | Class 3 Compliant



WARNING: Cancer and Reproductive Harm
P65Warnings.ca.gov

ORALITE®



RWJ102 Lime
RWJ103 Orange



RWP102 Lime
RWP103 Orange

STORM COVER RAINWEAR

PERFORMANCE FEATURES

- < Waterproof material with durable seam sealed construction.
- < 2" wide high performance reflective material.
- < Zipper/storm flap closure for weather protection.
- < Non-sparking snaps and zipper.
- < Adjustable wrist cuffs.
- < Mesh liner.
- < Hidden collar hood.

POCKETS

- < Lower front patch pockets with snap closure.
- < Left chest radio pocket.

PANTS

- < Adjustable leg cuffs.

SIZES: S-M, L-XL, 2X-3X, 4X-5X

ANSI 107 Type R | Class 3 Compliant - Jacket

ANSI 107 Class E Compliant - Pant

RAINWEAR BIB

PERFORMANCE FEATURES

Same as pants, plus:

- < High quality elastic suspenders with quick release buckle.
- < Front fly with snap closure.

SIZES: S-M, L-XL, 2X-3X, 4X-5X

ANSI 107 Class E Compliant



WARNING: Cancer and Reproductive Harm
P65Warnings.ca.gov



9665J Lime

9665P Lime



RW110 Lime
RW111 Orange

STORM STOPPER RAINWEAR

PERFORMANCE FEATURES

- < Waterproof material with durable seam sealed construction.
- < 2" wide high performance reflective material.
- < Zipper/storm flap closure.
- < Non-sparking snaps and zipper.
- < Fully vented cape back for breathability.
- < Adjustable wrist cuffs.
- < Hidden collar hood.
- < D-ring access on back.

POCKETS

- < Patch pockets with snap closure.

BIB

- < High quality elastic suspenders with quick release buckle.
- < Adjustable leg cuff straps.
- < Front fly with snap closure.

SIZES: S-M, L-XL, 2X-3X, 4X-5X

ANSI 107 Type R | Class 3 Compliant - Jacket
ANSI 107 Class E Compliant - Bib

RAINWEAR SET

Economy

Full rainsuit only. No separates.

PERFORMANCE FEATURES

- < Waterproof material with durable seam sealed construction.
- < 2" wide reflective material.
- < Zipper/storm flap closure.
- < Non-sparking snaps and zipper.
- < Adjustable wrist cuffs.
- < Hidden collar hood.

POCKETS

- < Lower front patch pockets with flaps.

PANTS

- < Adjustable leg cuff straps.

SIZES: S-M, L-XL, 2X-3X, 4X-5X

ANSI 107 Type R | Class 3 Compliant - Jacket
ANSI 107 Class E Compliant - Pant



WARNING: Cancer and Reproductive Harm
P65Warnings.ca.gov

1971 BY KISHIGO

MADE TO ORDER

"As an American born company, Kishigo embraces uniqueness because some of the best ideas come from our customers wanting something different. Our US-Made 1971 brand allows for creativity combined with the highest quality in the industry."

Elke Hirschman

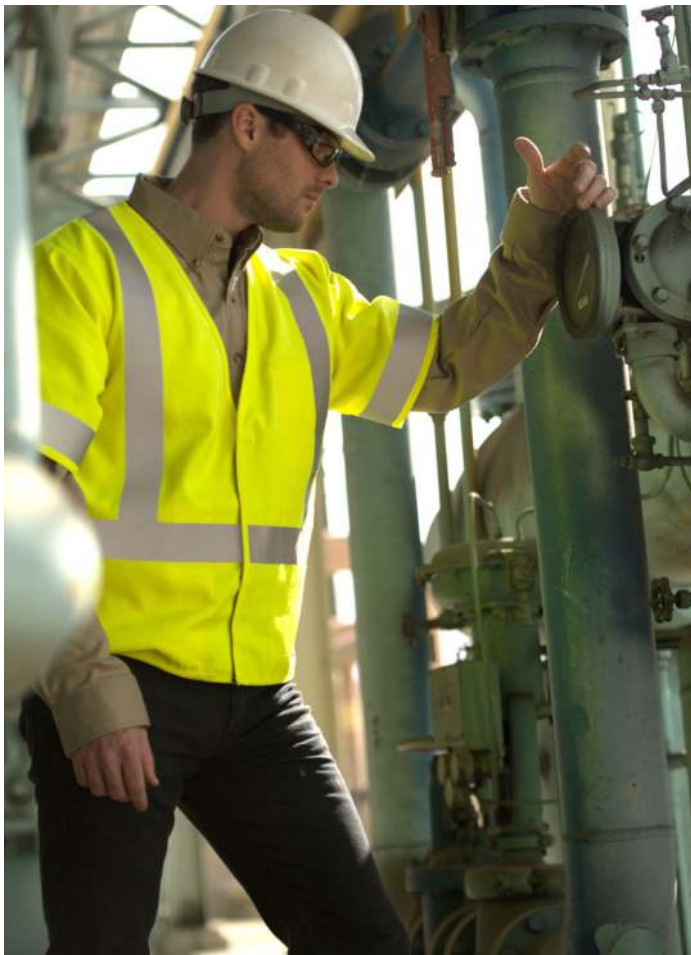


WARNING: Cancer and Reproductive Harm
P65Warnings.ca.gov

FM453 Lime
FR BREATHABLE
CONTRASTING VEST



WARNING: Cancer and Reproductive Harm
P65Warnings.ca.gov



F300 Lime
FM300 Lime Mesh



FR CLASSIC VEST

PERFORMANCE FEATURES

- < Modacrylic blend Flame Resistant solid or GlenGuard™ mesh material.
- < FR hook & loop front closure.
- < 2" wide Flame Resistant ORALITE® reflective material.

POCKETS

- < Two inside lower patch pockets.
- < One inside upper left 2-tier, 4-division pencil pocket.

SIZES: M-5X

NFPA 70E | ASTM F1506

Arc Rating/ATPV: Solid = 8.9 cal/cm² (CAT 2),
Mesh = 4.6 cal/cm² (CAT 1)

ANSI 107 Type R | Class 2 Compliant



GlenGuard® Hi-Vis is a registered trademark of Glen Raven, Inc.



F498 Lime



FR ECONOMY VEST

PERFORMANCE FEATURES

- < Westex® DH Modacrylic blend Flame Resistant solid material.
- < 2" wide laminated reflective material.
- < Flame Resistant hook & loop front closure.

POCKETS

- < Two lower inside patch pockets.
- < One inside left chest 2-tier, 4-division pencil pocket.

SIZES: M-5X

NFPA 70E-2012 | ASTM F1506 | CAT 2

Arc Rating/ATPV: 8.9 cal/cm²

ANSI 107 Type R | Class 3 Compliant

2-4 week lead time



WARNING: Cancer and Reproductive Harm
P65Warnings.ca.gov

**F715 Lime**

FR LONG SLEEVE WOMEN'S V-NECK T-SHIRT

PERFORMANCE FEATURES

- < Lightweight modacrylic blend Flame Resistant interlock knit material.
- < 2" wide high performance breathable reflective material greatly reduces hot spots and provides greater flexibility over solid tapes.

POCKETS

- < Left chest pocket.

SIZES: S-5X

NFPA 70E-2012 | ASTM F1506 | CAT 2
Arc Rating/ATPV: Solid = 16 cal/cm²

ANSI 107 Type R | Class 3 Compliant

2-4 week lead time

**F562 Lime****F562T Lime**

AVAILABLE
IN TALL SIZES



FR LONG SLEEVE T-SHIRT

Economy

PERFORMANCE FEATURES

- < Lightweight modacrylic blend Flame Resistant interlock knit material.
- < 2" wide laminated reflective material.

POCKETS

- < Left chest pocket.

SIZES: M-5X | MT-5XT

NFPA 70E-2012 | ASTM F1506 | CAT 2
Arc Rating/ATPV: Solid = 16 cal/cm²

ANSI 107 Type R | Class 3 Compliant

2-4 week lead time

**FM453 Lime**

FR BREATHABLE DARK CONTRASTING VEST

PERFORMANCE FEATURES

- < Modacrylic blend Flame Resistant GlenGuard® mesh material.
- < 2" wide high performance breathable reflective material w/ 3" black contrasting Westex Indura® FR ultra soft material.
- < Flame Resistant hook & loop front closure.

POCKETS

- < Two large lower inside pockets.
- < Left chest inside 2-tier, 4-division pocket.

SIZES: M-5X

NFPA 70E-2012 | ASTM F1506 | CAT 1



GlenGuard® Hi-Vis is a registered trademark of Glen Raven, Inc.



WARNING: Cancer and Reproductive Harm
P65Warnings.ca.gov



F2802 Lime

FR HARD HAT NAPE PROTECTOR

PERFORMANCE FEATURES

- < Modacrylic blend Flame Resistant solid material.
- < Protects your neck and shoulders from the sun.
- < Self-adhesive hook & loop tabs allow you to attach to the inside or outside of any hard hat.
- < 2" wide Flame Resistant ORALITE® reflective material.

Arc Rating/ATPV: 8.9 cal/cm² (Lime)

2-4 week lead time



ORALITE®



WARNING: Cancer and Reproductive Harm
P65Warnings.ca.gov



4708
Red



4705 Green **4709** Light Blue **4711** White **4712** Fluorescent Orange **4713** Fluorescent Black **4702** Yellow



4706 Tan **4707** International Orange **4703** Dark Blue **4710** Yellow **4704** Royal Blue



4700 SERIES INCIDENT COMMAND VEST

PERFORMANCE FEATURES

- < Poly/cotton fabric with matching color trim.
- < Hook & loop front closure.
- < 5/8" wide reflective stripes with 2" contrasting material.
- < Clear plastic card holder holds 4.25" x 11" (back) and 3" x 5" card (front).
- < Minimum 25-piece order.

POCKETS

- < (A) Lower right pocket with one division (9.5" wide x 8.5" tall overall).
- < (B) Lower left inside large notebook/flashlight pocket (10.25" wide x 9.5" tall overall).

SIZES: S-5X

Non-ANSI Compliant

2-4 week lead time

HIGH-QUALITY CUSTOM PRINTING

A name says a lot. Your name signifies who you are, what you stand for, and what you believe in. At Kishigo we believe in quality, and we can help you proudly display that name with high-quality, custom printing.

Our in-house graphic design and screen print facility services specialize in traditional screen printing, reflective graphic transfers and die-cut numbers and letters (reflective and non-reflective). We'll provide best practice solutions ensuring the optimum application for your specific fabric—including expensive fire-resistant materials—to ensure your garments come out right the first time.

Plus, our imprint technicians rigorously test everything to make sure your items get the correct temperature requirements, eliminating shrinkage, unusual rippling of the tape or anything else that might distort your garments. Take out the guesswork and let our experts handle all your printing and graphic needs.



WARNING: Cancer and Reproductive Harm
P65Warnings.ca.gov



11250 SLATER AVE FOUNTAIN VALLEY, CA 92708 | KISHIGO.COM | P (800) 338-9480 | CAT-HVW23-2